



Siera VMS

Software Manual

Foreword

The content of this manual will be updated according to the enhancement of product features, and will periodically improve or update the products or programs described in this manual. The updated contents will be added in the new version of this manual without prior notice.

THEME

Siera VMS	1
Foreword.....	1
1 Software Installation And Operating Environment.....	3
1.1 Overview.....	3
1.2 Operating Environment.....	3
1.3 Software Installation.....	4
1.4 Software Uninstall.....	5
2 Instructions.....	5
2.1 Software Registration.....	5
2.2 Soft Login.....	6
3 Preview Function.....	10
3.1 Interface Introduction.....	10
3.2 Live Preview.....	12
3.3 Device Tree and View.....	16
3.4 PTZ Function.....	19
3.5 Window Segmentation.....	22
4 Add Equipment.....	23
4.1 Search Add Device.....	23
4.2 Manually Adding Devices.....	25
4.3 Modifying Device Information.....	26
4.4 Delete Device and Device Configuration.....	27
5 Device Configuration.....	28
6.Playback.....	28
6.1 Interface Introduction.....	28
6.2 Playback Device Recording.....	30
6.3 Playback Local Recording.....	32
7 Round Trip Plan.....	34
7.1 Configure Round Robin Plan.....	34
7.2 Carry Out The Round Plan.....	37
8 Logs.....	38
8.1 Operation Log.....	38
8.2 Alarm Log.....	39
9 Digital Map.....	40
10 Event.....	41
11 Event Configuration.....	41
12 Record Plan.....	44
12.1 Add Channel.....	44
12.2 Video Plan.....	45
13 User Configuration.....	46
13.1 Role Management.....	46
13.2 User Management.....	47
14 System Configuration.....	48

1 Software Installation And Operating Environment.

1.1 Overview

Applicable to security monitoring equipment management software for small network monitoring field.

Based on windows platform, can run on PC.

Cameras that can browse multiple devices monitor video in real time.

Can view multiple device's camera video and you can playback video.

Electronic maps can be configured to clearly describe the location of various devices.

Configure alarm setting items for network video monitoring equipment to realize alarm linkage between management software and monitoring equipment.

Video automatic backup function, mainly used in back-up data backup of IPC and other non-hard disk devices.

For each device, each device window, each device channel can establish a monitoring plan.

Create a separate configuration file for each user, and their respective habits and styles do not interfere with each other.



Note: This software is for connecting multiple different types or models of devices (NVR/HVR/DVR/DVS/IPC). This user manual only describes the software operation. Please refer to the relevant product manual for the function settings of specific devices.

This manual is provided for those responsible for planning, executing, or reviewing the hardware installation of the network video surveillance software. You should have the basic operating knowledge and experience of related equipment (NVR/HVR/DVR/DVS/IPC).

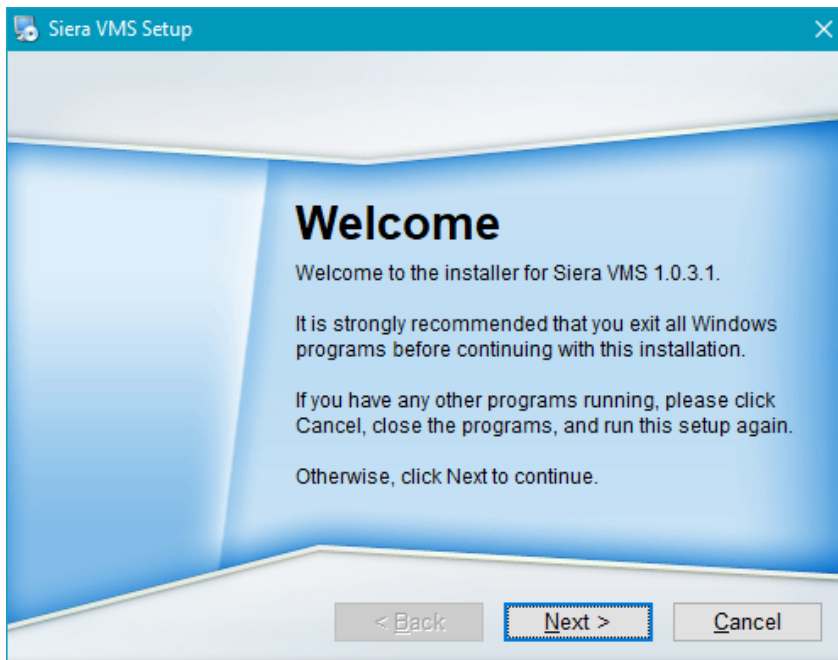
1.2 Operating Environment

Operating System	Windows2000/XP/2003/Vista/Windows 7/ Windows 8/Windows 10 System
CPU	Above 2.4GHz
RAM	1G or above
Monitor	1024*768 resolution display

video	Must support hardware scaling (such as ATI, TNT2 PRO), It is recommended to use ATI9800 and above graphics Card, dual channel, memory 128M above/128b
Network card	100/1000M
Note	If the management software needs to manage a lot of Decoded channel pictures, it is recommended that the memory, graphics card, and CPU have better configurations.

1.3 Software Installation

Step 1: Double-click the Siera VMS software installation package, and the installation interface appears as shown in the figure below.



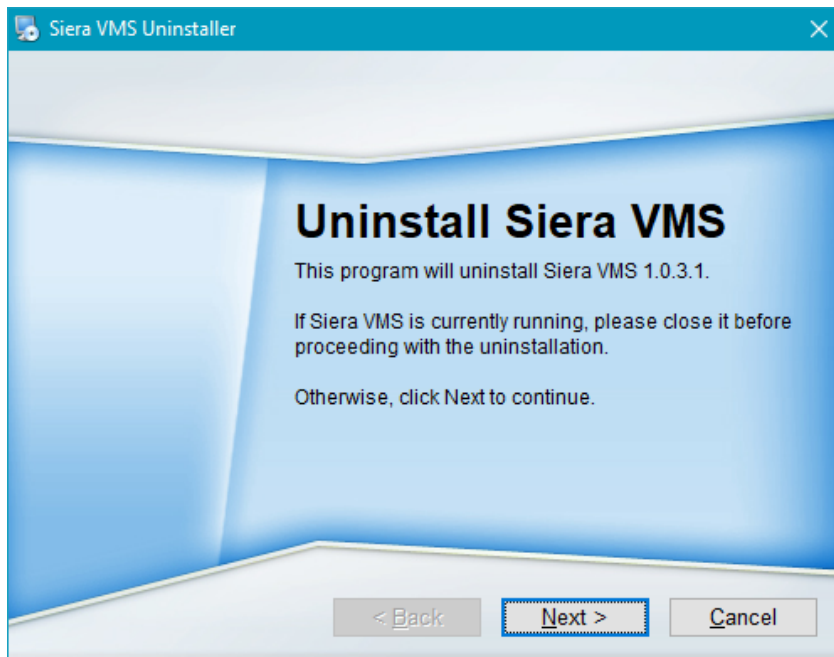
Step 2: Click "Next", select the software installation path, the default path "C:\Program Files (x86)\Siera VMS"

Step 3: Click Next and wait for the installation to complete. Click Finish to exit

Note: If the computer has a different version of Siera VMS installed, it is recommended to uninstall the original version of the Siera VMS, and then follow the above installation process for software installation.

1.4 Software Uninstall

Method 1: Click [Start] [Programs] [Siera VMS] [Uninstall Siera VMS] Uninstall software will delete. For all related files, it is recommended that you back up the video files and screenshot before uninstalling to avoid being deleted.



Method 2: Go to the system control panel and select [Siera VMS]. Select “Delete”. Uninstalling the software will delete all related files. It is recommended that you back up the video files and screenshot before uninstall to avoid being deleted.

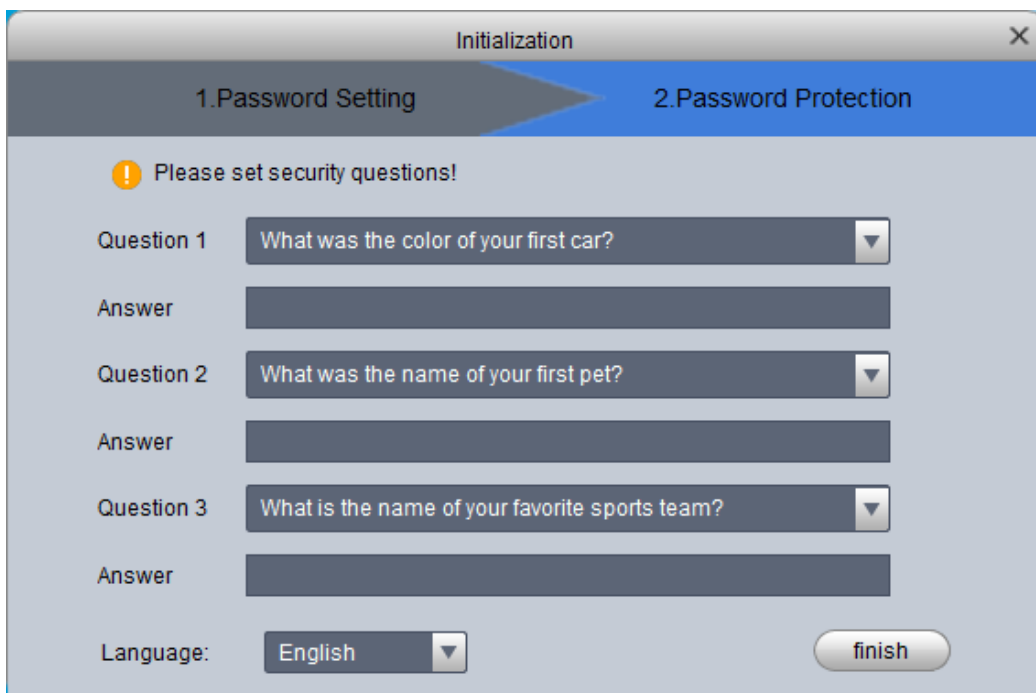
2 Instructions

2.1 Software Registration

Step 1: Double-click the Siera VMS shortcut generated on the desktop, the registration screen appears, enter the admin password, confirm the password, and click Next.



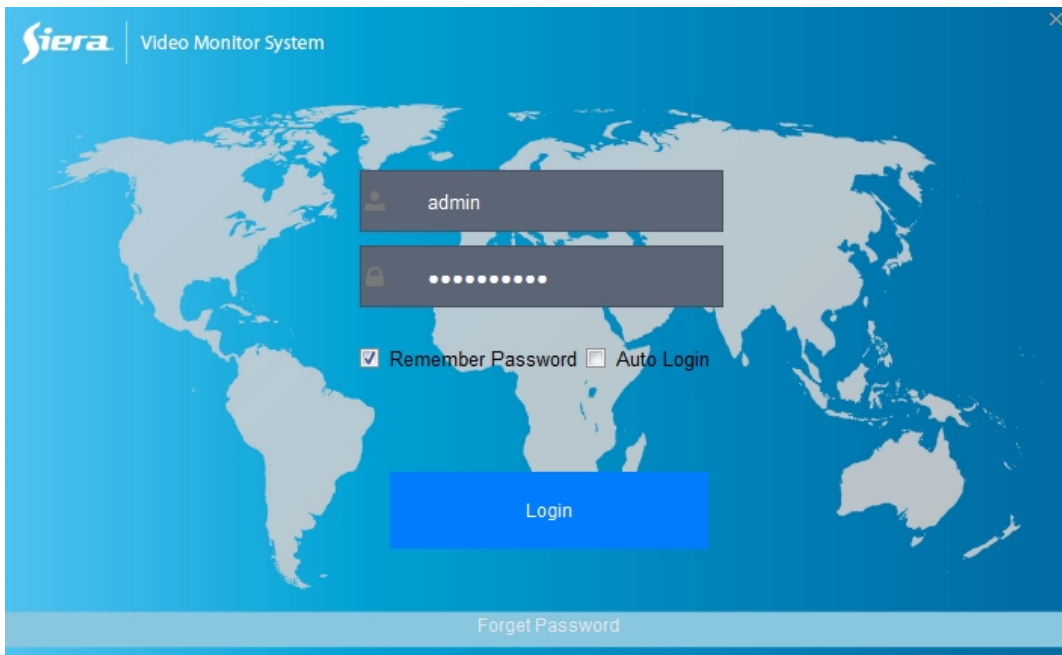
Step 2: Enter the password protection request (forgot password to retrieve admin password), and click Finish.



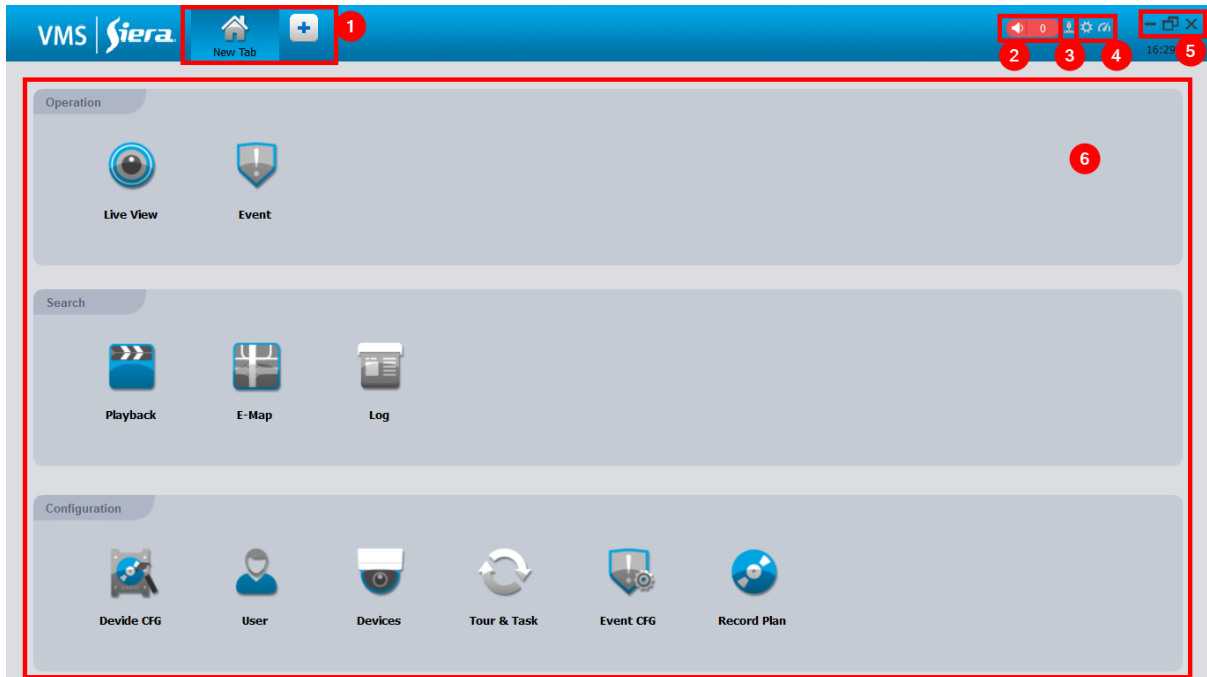
2.2 Soft Login

Step 1: Double-click the desktop generated Siera VMS shortcut, the login screen appears, enter the user name, password, check the login interface under the "save information", you can save the user







name and password, check the "Auto Login", next time you can directly log in Without entering a username and password. (Forget your password by clicking on the blue "forgot password" below the login page to retrieve your password).



Step 2: Click "Login". After the user passes the verification, enter the main program, as shown below:



No.	Name	Instructions
1	Feature tab	Click to add the "new function page" tab, in the new function also click the corresponding function to enter the corresponding function interface, while the tab name is updated to the function name.
2	Event Management	<p>① And , click to switch the alarm sound or silent.</p> <p>② , indicates the number of alarm</p>
3	User Management	<p>① Click to select the lock screen and lock the screen.</p> <p>② Click to select Switch User and Switch Login User.</p> <p>③ Click to select the help manual and open the help manual.</p>

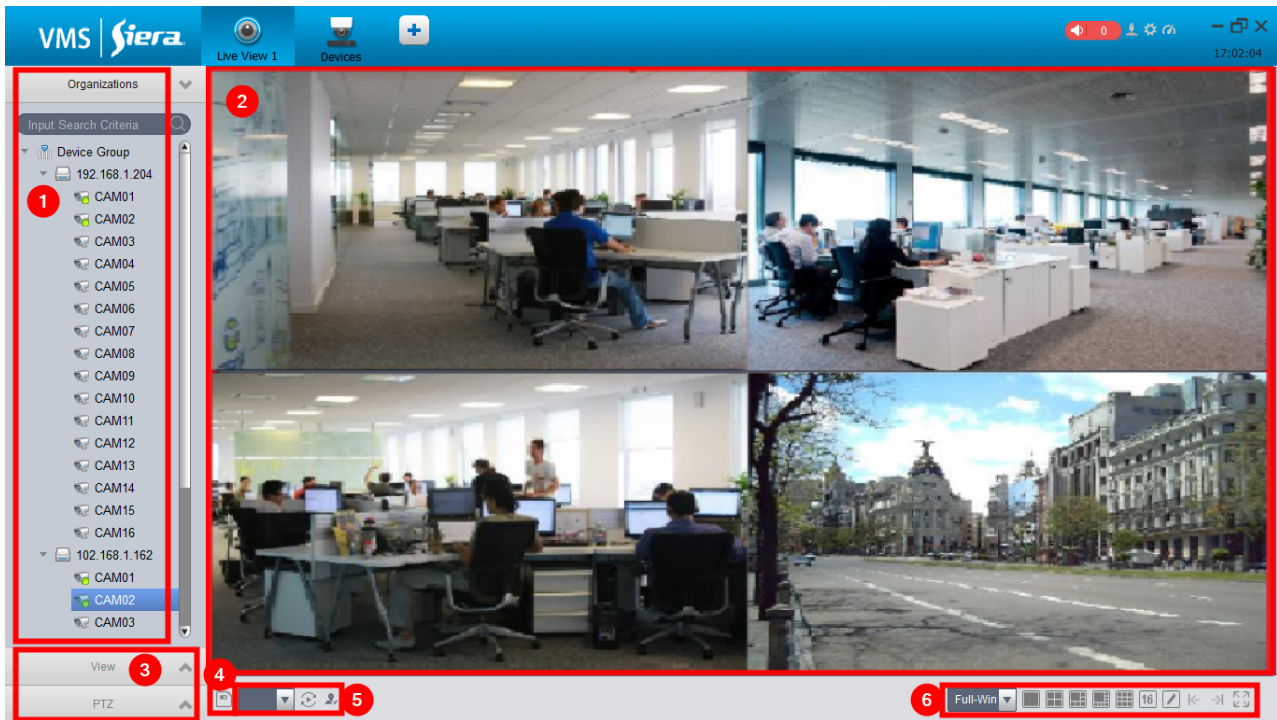
		<p>④ Click  select About, show version information.</p>
4	System Management	<p>① Click  to enter the "System Settings" interface. Support, system configuration such as basic configuration, alarm and language, device management, etc.</p> <p>② Click  to display the CPU and memory usage of the system. If the CPU usage is too high, the icon turns red.</p>
5	Window Management	<p>① Click  to minimize the software window.</p> <p>② Click  to maximize the software window.</p> <p>③ Click  to exit the software.</p>
6	Function List	<p>The function list is divided into an operation area, a search area, and a configuration area. Functions are provided as shown below.</p> <p>① Preview Access the camera for real-time browsing video. During the browsing process, local video recording, picture capture, audio activation, voice intercom, instant playback video, video amplification, video stream switching, device parameter configuration, alarm output configuration, channel information update, logout, video window display mode, and video setting Aspect ratio, save the view, open the round tour, control the PTZ, create new groups, control the dome and other operations.</p> <p>② Events Support for viewing, processing, and annotating events.</p> <p>③ Playback Supports playback and export of device videos, device pictures, local videos, and local pictures.</p> <p>④ Electronic map Through the electronic map, you can intuitively understand the location of the video channel or alarm channel.</p> <p>⑤ Log Support for querying and exporting system logs and operation logs.</p> <p>⑥ Equipment management Supports searching and adding devices, importing or</p>

		<p>exporting device information in batches, and modifying and deleting device information.</p> <p>7 Equipment configuration It supports camera parameters, network parameters, event parameters, storage parameters, and system parameters of the camera.</p> <p>8 Event Settings The supported alarm types include device alarms, and also support for setting alarm notifications and alarm linkage videos.</p> <p>9 Planning plan Supports configuration and management of rotation training programs.</p> <p>10 Video plan Support to set the timer recording period and video recording channel.</p>
--	--	---

3 Preview Function

3.1 Interface Introduction

According to the area introduced the various parts and functions of the interface. Click , and select Preview on the New Features interface. The Preview interface is displayed.



No.	Name	Instructions
1	The device list area	<p>Contains the device tree and the view module.</p> <p>① The device list supports management devices (rename groups and deletion groups), code stream switching, device configuration, and synchronous intercom operations.</p> <p>② Adding groups, deleting view groups, renaming view groups, and deleting views are supported in the view list.</p>
2	Preview area	<p>Browse the video area, the number of windows supports multiple ways of segmentation.</p> <p>In the process of previewing the video, it supports capturing images and videos, and supports operations such as turning round robin, voice intercom, and area zooming. For details, see "3.2 Live Preview."</p>

3	PTZ control zone	The access device supports the PTZ function, so PTZ control can be performed in the changed area. For details, see "3.4 PTZ Function".
4	View creation area	<p>When there are many access devices and it is often necessary to preview multiple fixed device monitoring screens at the same time, the preview window for opening multiple device previews is saved as a view, and the preview is subsequently previewed, the preview of multiple devices in the view is enabled .</p> <p>The created view is added to the view tab of the device list area.</p>
5	Patrol Control Area	When there is a roving plan, you can quickly select the roving plan in this area and start the roving tour.
6	Window Split Control Area	Adjusts the number of windows, pages, and full screen. For detailed operation, please refer to "3.5 Window Segmentation".

3.2 Live Preview

Real-time view camera captures video data, supports local recording, capture, open audio, and zoom in during the process.

The following methods are supported to enable preview:


Select the preview window and double-click the device to be previewed in the device list area.


Drag the device that needs to be previewed in the device list to the preview window.


If you open the preview of the view, you can enable the preview of all the cameras under the view at the same time.




Click  to start recording, click again to close.

Click  on the screenshot.

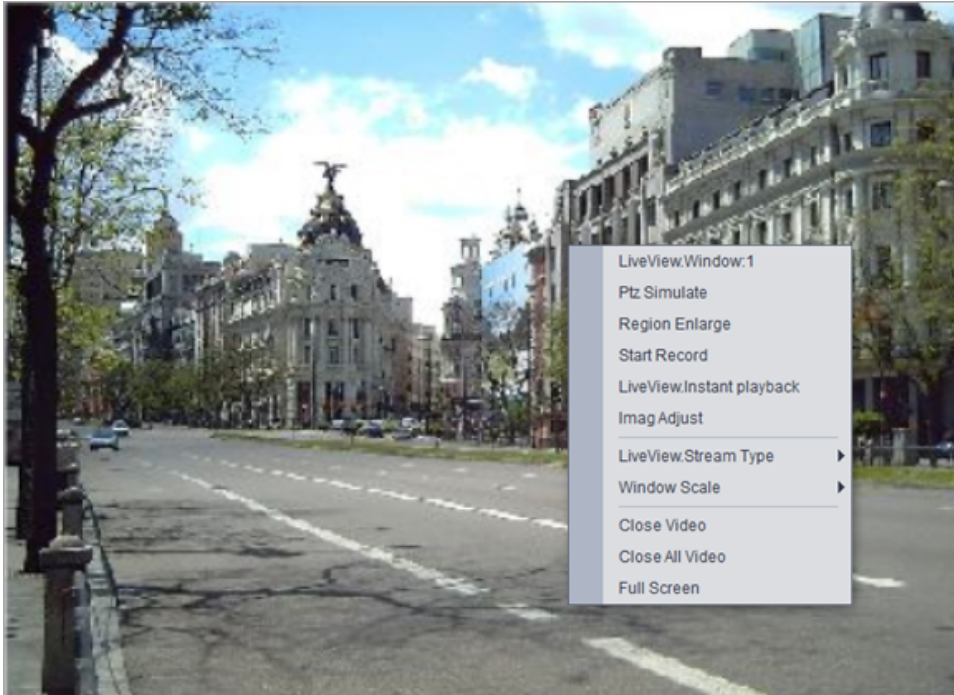
Click  to close the audio and click Close again.

Click  to open the area to zoom in, click again to close.

Zoom in using the area, click the left mouse button to drag and release the mouse.

Click  to close the video.

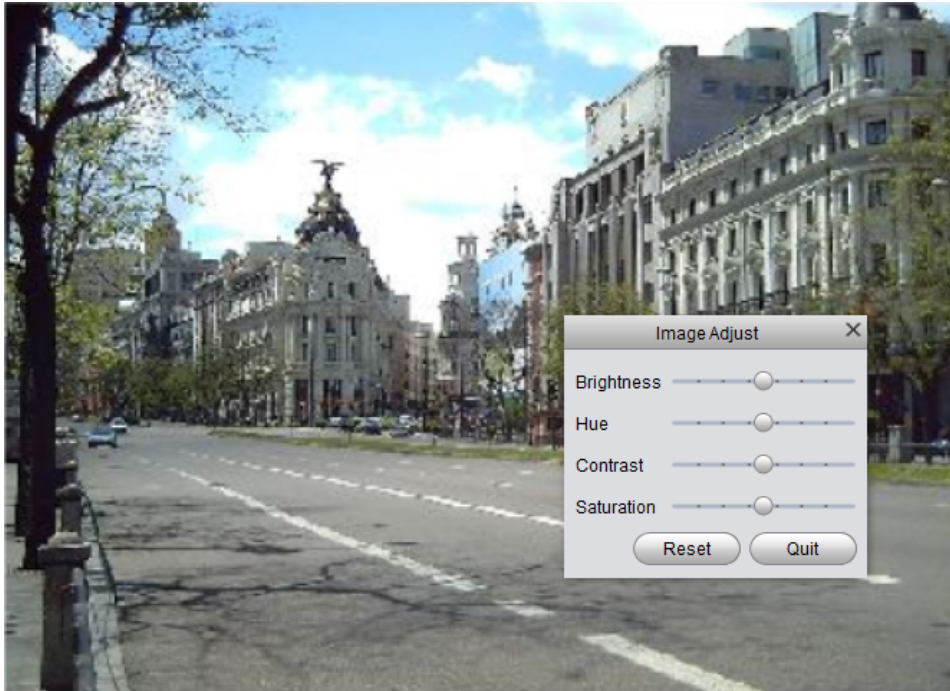
You can also use the right mouse button to pop up a directory window for operation.



PTZ Simulate:

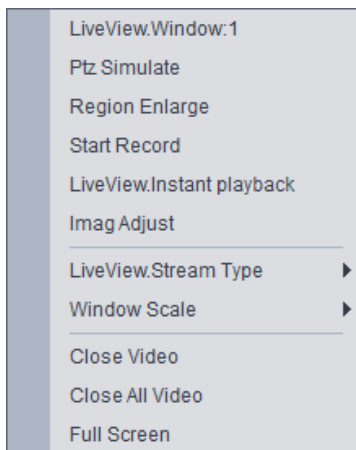
1. Click on the PTZ Simulate on the window to open this function.
2. Press the left mouse button and drag the mouse to rotate the head to the direction of the drag.
3. Click on the PTZ Simulate on the window again to turn off the function.

Image Adjust: Click on the picture adjustment in the window to open the picture adjustment window.



Click on "Reset", to restore the default properties.

Full Screen:



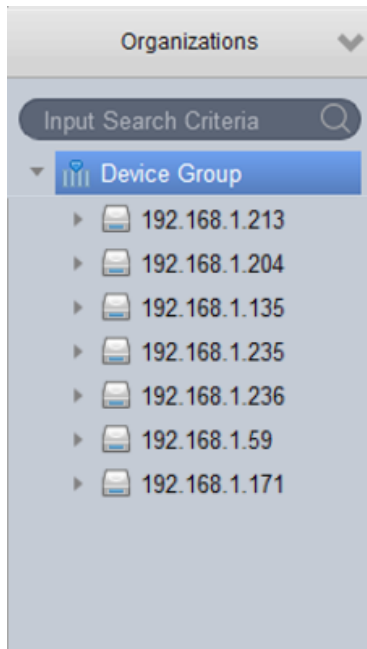
1. With the right mouse button, open the directory window to select the operation.
2. Select "Full Screen" and it will open.



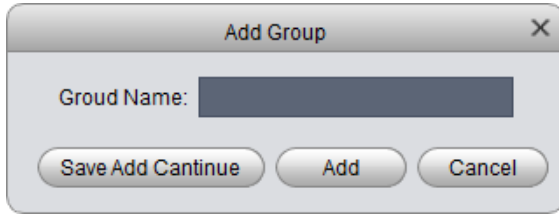
3. To exit full screen, click the right mouse button, select "Remove full screen" or press "ESC".

3.3 Device Tree and View

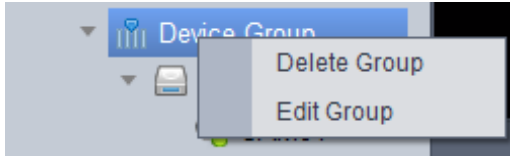
Organizations:



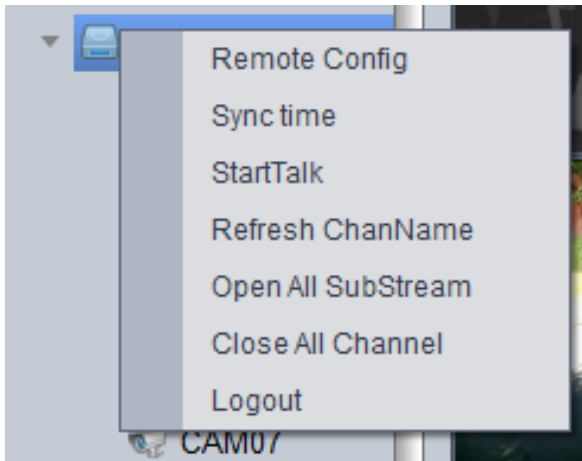
Right-click the blank area to create a new group and enter the Add Group interface as shown below.



Right-click on the group to delete groups and edit groups (rename).



Right-click on the device to display device-related operations (synchronization time, intercom, etc.)



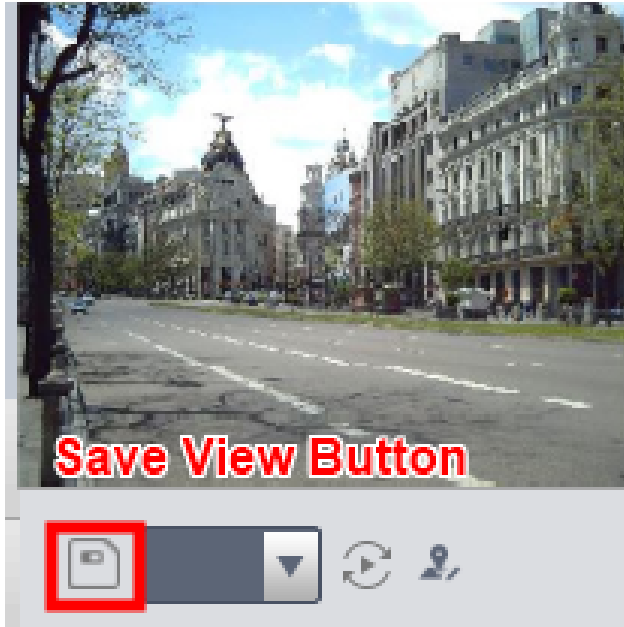
Click on the device configuration to enter the device configuration interface.

View:

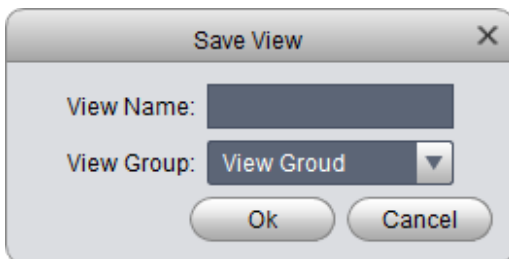
The view group related operations are the same as the device group. When there are many access devices and it is often necessary to preview multiple monitoring screens of the fixed device at the same time, the preview window for opening the multiple device preview is saved as a view, and the preview is subsequently previewed, that is, the preview of multiple devices in the view is enabled.

Save view related operations:

1. Click the View button. The location of the view button is as shown in the figure below.



2. Enter the view name, select the view group, click the OK button, and save the view.




3.4 PTZ Function



PTZ control moves in 8 directions, zoom, zoom, iris, step, and more functions.

Click to select the window to open the video (the window has a blue border) to control the PTZ (the channel's PTZ settings will not be described).



1. [Direction Control]: respectively control the PTZ up, down, left, right, the mouse is pressed and kept as always controlled, released as stop control;

2. [Mouse Simulation]: Click  to open the mouse simulation, and simulate the mouse in the right window of the video window.



3. "Magnification" adjusts the zoom control of the PTZ camera lens;


Click  to reduce the zoom lens, click to  enlarge the zoom lens multiple;

4. [Focus] Adjust the focus of the control PTZ camera lens.

Click  the PTZ to zoom out and click  the PTZ focus to zoom in;


5. [Aperture] Adjust the aperture of the PTZ camera lens.

Click  PTZ aperture to zoom out, click  PTZ aperture to zoom in;


6. [Step size] Adjust the step length to control the top, bottom, left and right of the PTZ, and the speed when cruising;  Drag the dot to set the step, and the mouse pauses to display the step;


7. [Preset Point] By setting a preset point, you can quickly switch the camera to the position corresponding to the preset point.




Click  to jump to the preset position you have set.

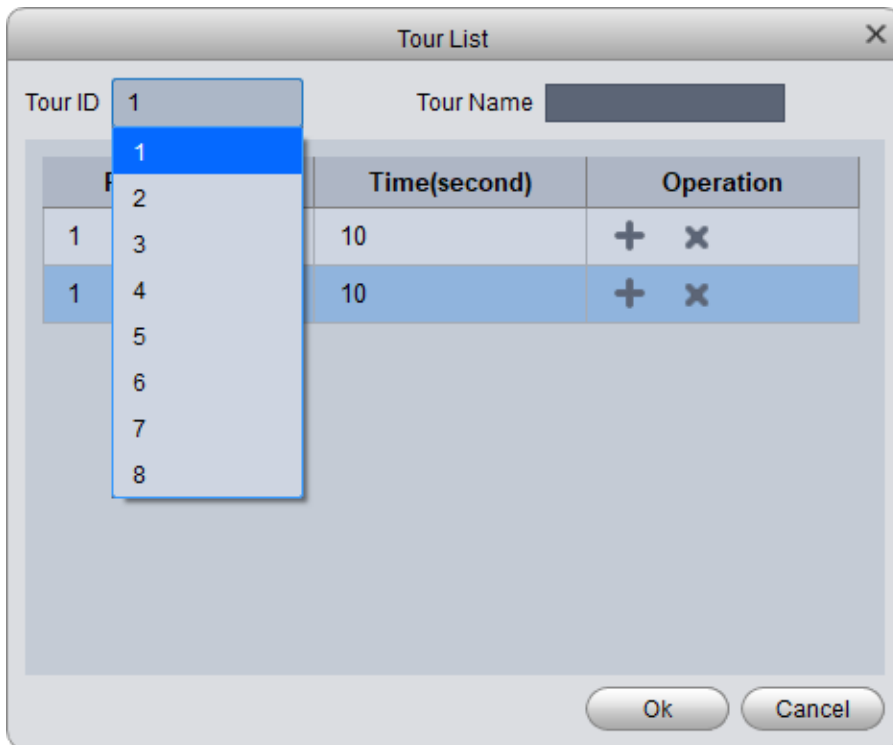
Click  to enter the interface for setting preset points.


Click  to return to the original interface.


Click  Save Presets.

Click  to delete presets.

8. [Cruise] By setting the cruise, the camera will cruise between different presets.





Click  to open cruise.

Click  to open the settings cruise window.

Set the cruise method:

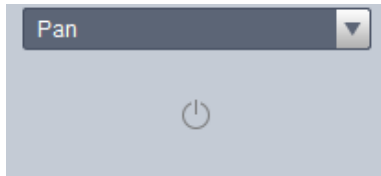
Step 1: Set the cruise number and cruise name.

Step 2: Select the preset point in the Preset column and enter the time in the Time column. You need to set at least two "preset points" to set the cruise.

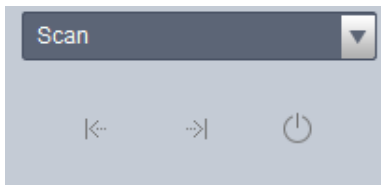
Step 3: Click  to increase the row, click  to delete the row.


Step 4: Click OK to save the cruise.


9. [Horizontal rotation] Click  to turn on horizontal rotation.




10. [Horizontal rotation] By setting two boundaries, the camera is rotated repeatedly between two boundaries.

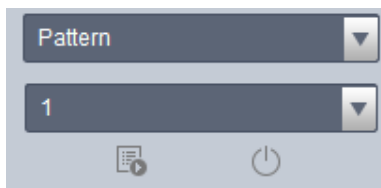



Step 1 Use the PTZ direction control to turn the PTZ left to the desired position and click  to set the left boundary.

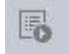
Step 2 Use the PTZ direction control to turn the PTZ right to the desired position and click  to set the right boundary.

Step 3 Click , and the camera rotates repeatedly between the two boundaries.

11. [Surveillance] It records the user's operation to rotate the camera. It can make the camera rotate according to the recorded track.




Step 1 Click  to start setting the patrol and zoom, focus or rotate the camera.


Step 2 Click  to finish the patrol setup.

Step 3 Select the required patrol number, , and the camera rotates according to the click recorded trajectory.


3.5 Window Segmentation




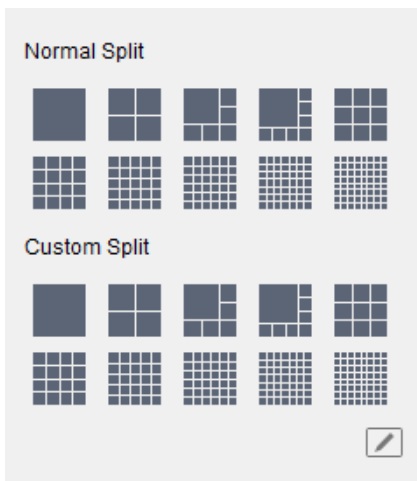
Click  to enter the standard 1 window, 4 window, 6 window, 9 window, 16 window mode respectively.

Click , Previous Page.

Click , next page.

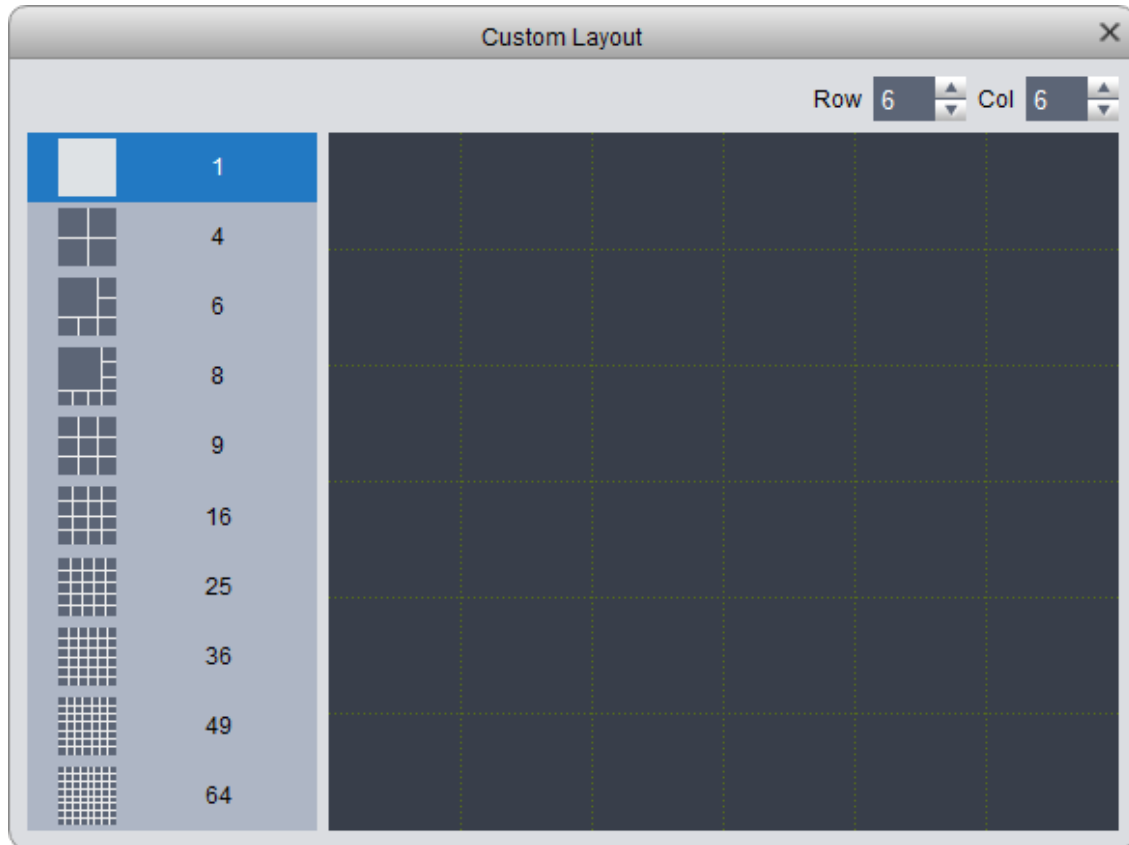
Click  to display in full screen, press ESC to exit the full screen.

Click  to select more window split modes.



10 standard divisions, 10 custom divisions. Click  to switch the split mode.

Click Set Custom Split.



4 Add Equipment

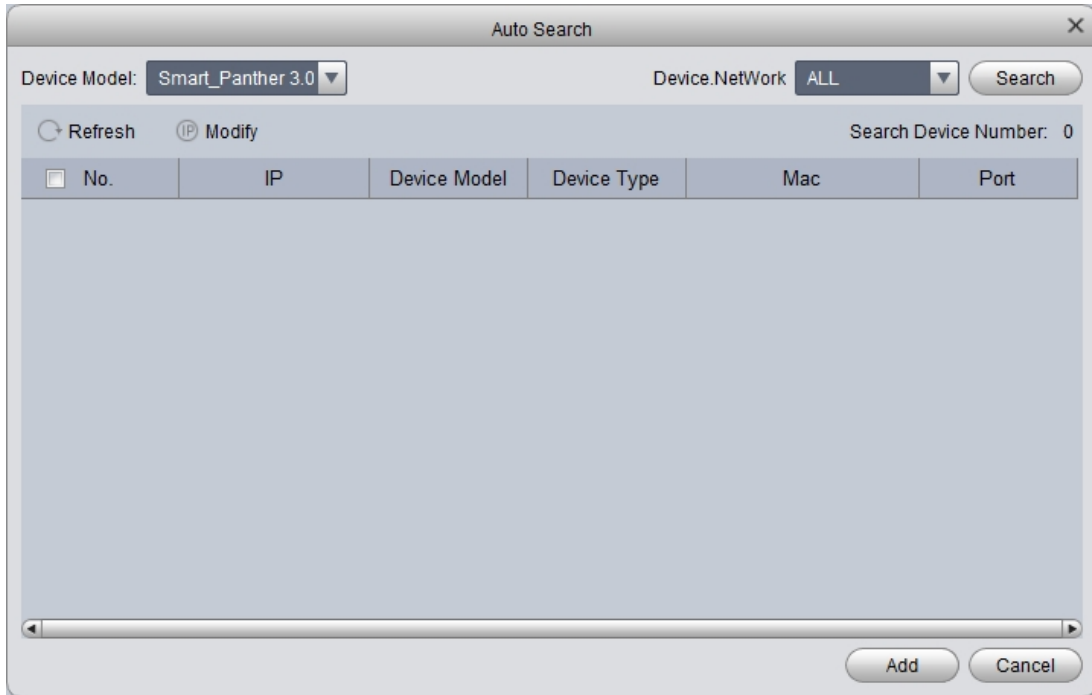
Siera VMS supports a variety of ways to add devices. Add devices based on the number of added devices and device protocols.

4.1 Search Add Device

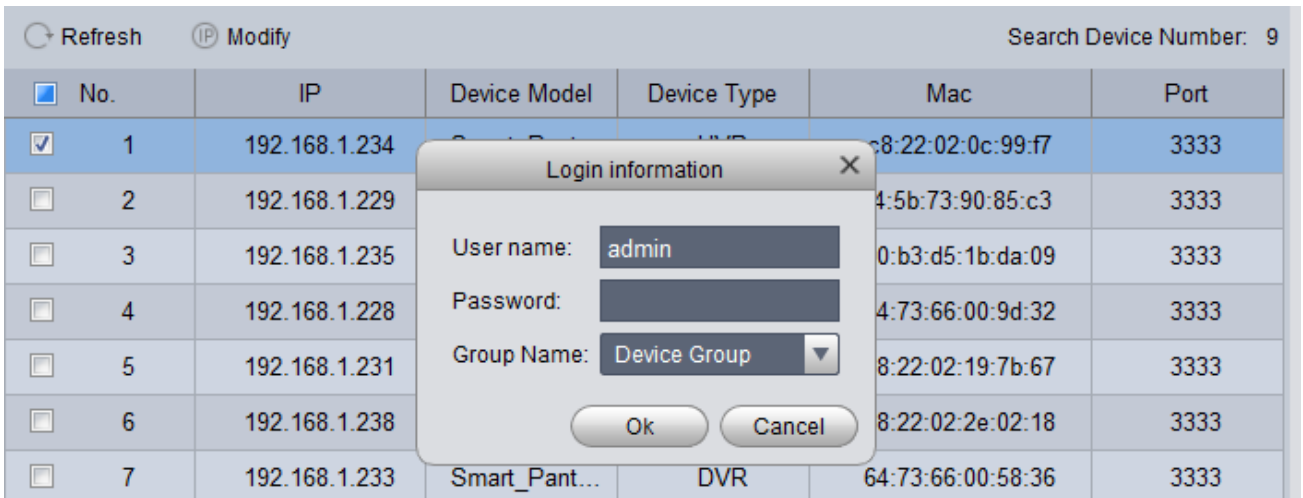
You need to add devices in batches or do not know the device IP address. It is recommended that you add devices by searching for them.

On the Device Management page, click Auto Search.

The system displays the "Auto Search" screen as shown in the figure below.



The device model can select the device to search, click Search, the system displays the search results. (The added device will not be displayed).



Select the device you want to add, click Add, and the pop-up is added. Click OK to pop up the login information, enter the user name, and password to add the device.

Modify

Device Name: 192.168.1.234

Model: Smart_Panther 3.0

Method to add: IP

Type: DVR

IP/Domain Name: 192.168.1.234

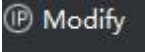
Port: 3333

Group name: Device Group

User Name: admin

Password: •••••

Save Cancel

Select the device to be modified, and click  to enter the modify device IP interface, enter the user name, password, new IP address, modify the IP.

4.2 Manually Adding Devices

Add a single device and support the device's IP address or domain name or cloud ID. It is recommended that you add devices manually.

A screenshot of a 'Manual Add' dialog box. The fields are: Device Name (empty), Model (Smart_Panther 3.0), Method to add (IP), Type (DVR), IP/Domain Name (empty), Port (3333), Group name (Device Group), User Name (admin), and Password (empty). Buttons at the bottom are 'Save and Continue', 'Add', and 'Cancel'.

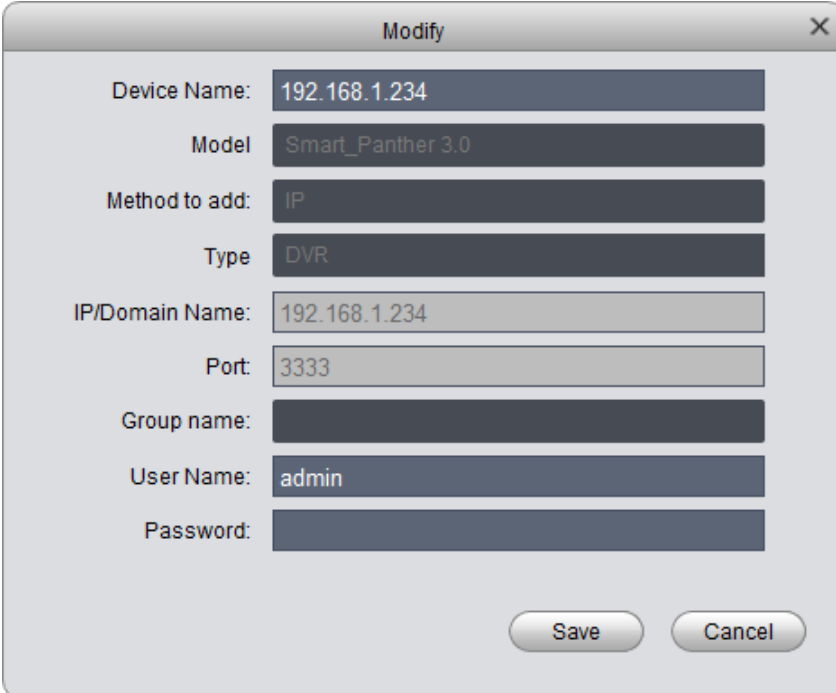
The adding method is changed to IDCloud or IDCloud2 to add devices through the cloud.

A screenshot of a 'Manual Add' dialog box. The fields are: Device Name (empty), Model (Smart_Panther 3.0), Method to add (IDCloud 2), Type (DVR), Cloud ID (empty), Group name (Device Group), User Name (admin), and Password (empty). Buttons at the bottom are 'Save and Continue', 'Add', and 'Cancel'.

Enter (select) the appropriate information and click Add to add the device.

4.3 Modifying Device Information


Incorrect username or password You can modify the correct user name or password by modifying the device information.



The image shows a 'Modify' dialog box with the following fields and values:


Field	Value
Device Name	192.168.1.234
Model	Smart_Panther 3.0
Method to add	IP
Type	DVR
IP/Domain Name	192.168.1.234
Port	3333
Group name	
User Name	admin
Password	



Buttons: Save, Cancel

Click  to enter the modify page, enter the new username and password, and click Save.

4.4 Delete Device and Device Configuration

Click  to delete the line device.

To delete devices in batches, tick the check boxes of the devices to be deleted, and click  and to delete all checked devices.

Click  to enter the device configuration interface. The device that is not logged in is displayed  and cannot be clicked.

5 Device Configuration

The device configuration can obtain and modify the configuration information of the device. You can access the device configuration by right-clicking the device tree in the preview interface or enter it through the device management interface. (Different equipment and equipment management interface functions are different, please take the actual total energy as the main)



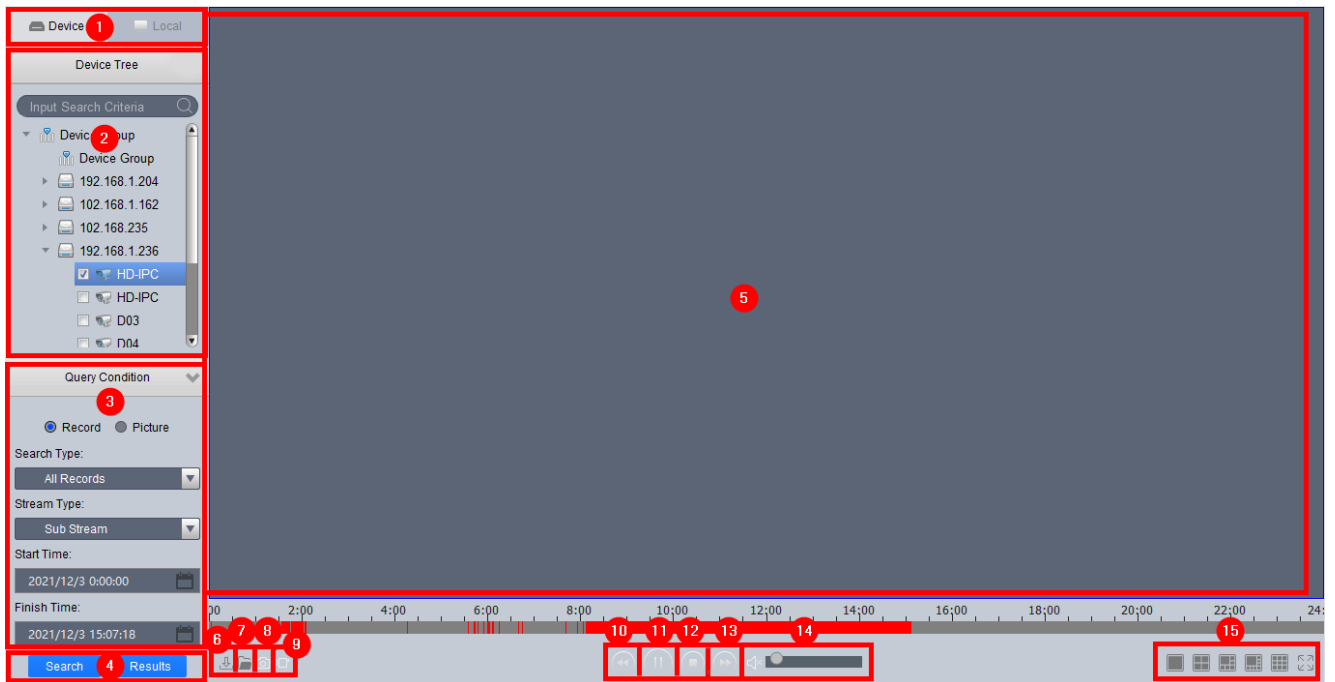
Operation mode: (take encoding configuration as an example)

1. Select the type to modify. Click System Configuration, then click Code Configuration to enter the code configuration interface.
2. Modify the content to be modified.
3. Click Save to save the modified content. Click Refresh to regain configuration information.

6.Playback

You can play back and export device videos, device pictures, local videos, and local pictures.

6.1 Interface Introduction



No	Name	Introduction
1	Video Source	Select to query video on the local or device
2	Device tree	Select device to query video
3	Query conditions	Select the filter conditions for the query
4	Query button	Query and click to pop up the query result
5	Video	display area

6	Download button	Display download progress information
7	Open button	Opens a locally saved video through Explorer
8	Snapshot button	Keeps the current picture on the video window
9	Video button	Save the video on the device to the local time
10	Slow down button	Slows playback
11	Play button	Play or pause video
12	Stop button	Stop all playing videos
13	Quick release button	Quick release button to speed up the play order
14	Sound	Sound Adjust playback sound
15	Window mode	Switch window split mode

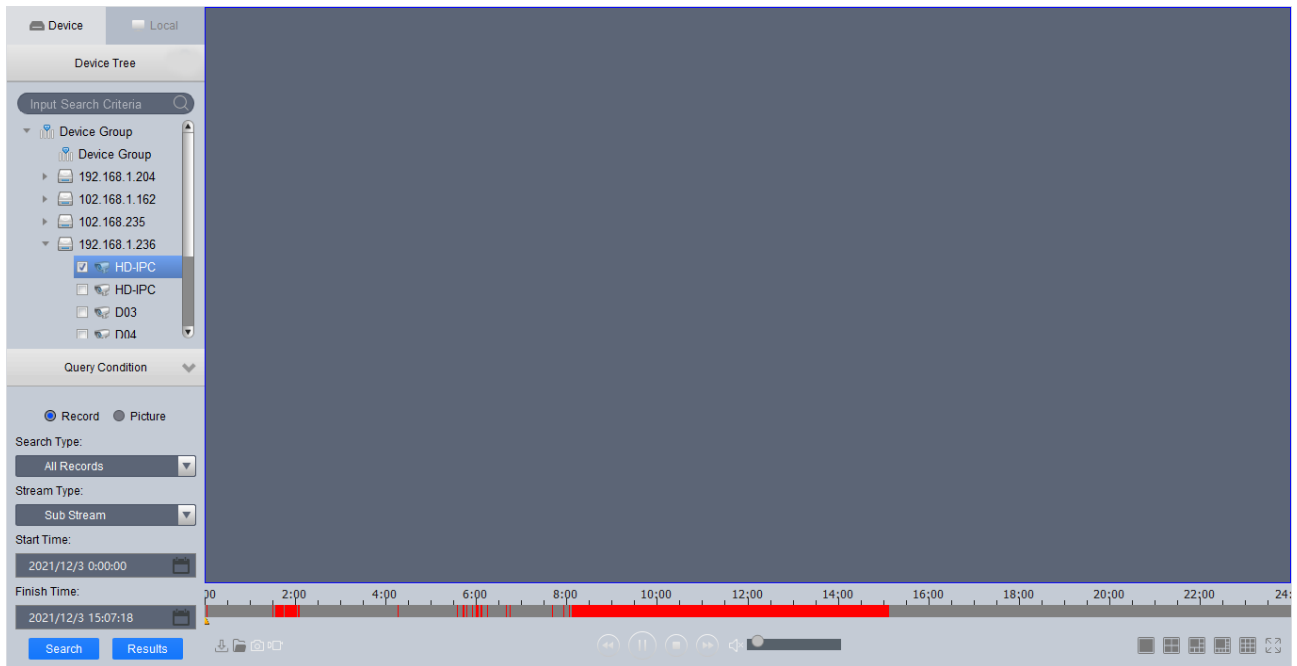
6.2 Playback Device Recording

Prerequisites: There is a device recording on the channel.

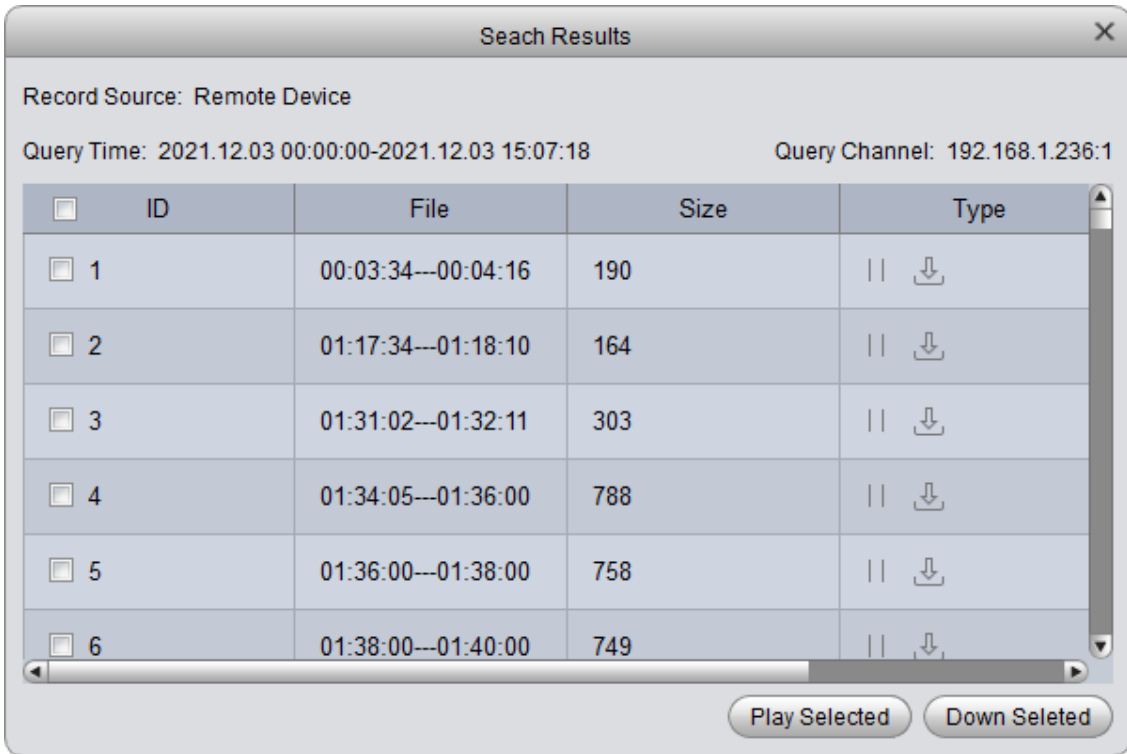
Steps:


1. Select the Devices tab on the Playback screen.

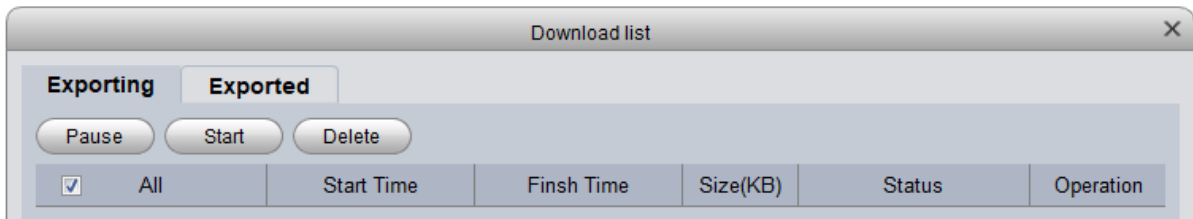
2. Select the device channel in the "Device Tree" (check box).
3. Select "Video" in the query conditions, then select the video type, stream, and time, and click Search.
4. After the query, if there is a video timeline as shown in the figure below, double-click the timeline to display the video for that time. (Playback by time).



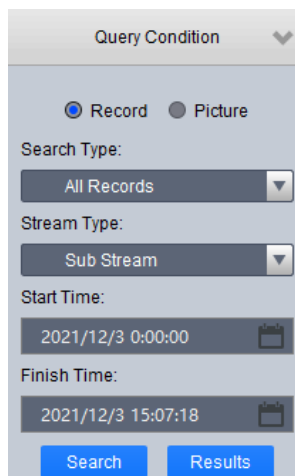
5. Click on the query result to enter the video file playback list, select the desired file, and click "play".
Note: If you select multiple playback, instead of opening all files at the same time, play each file in order. (playback by file)



6. If you select Download in the figure above, you can download the file to your local computer. Click  to enter the download interface and check the download progress.)



7. If you select a picture in the search criteria and select the time, you can view the device capture.



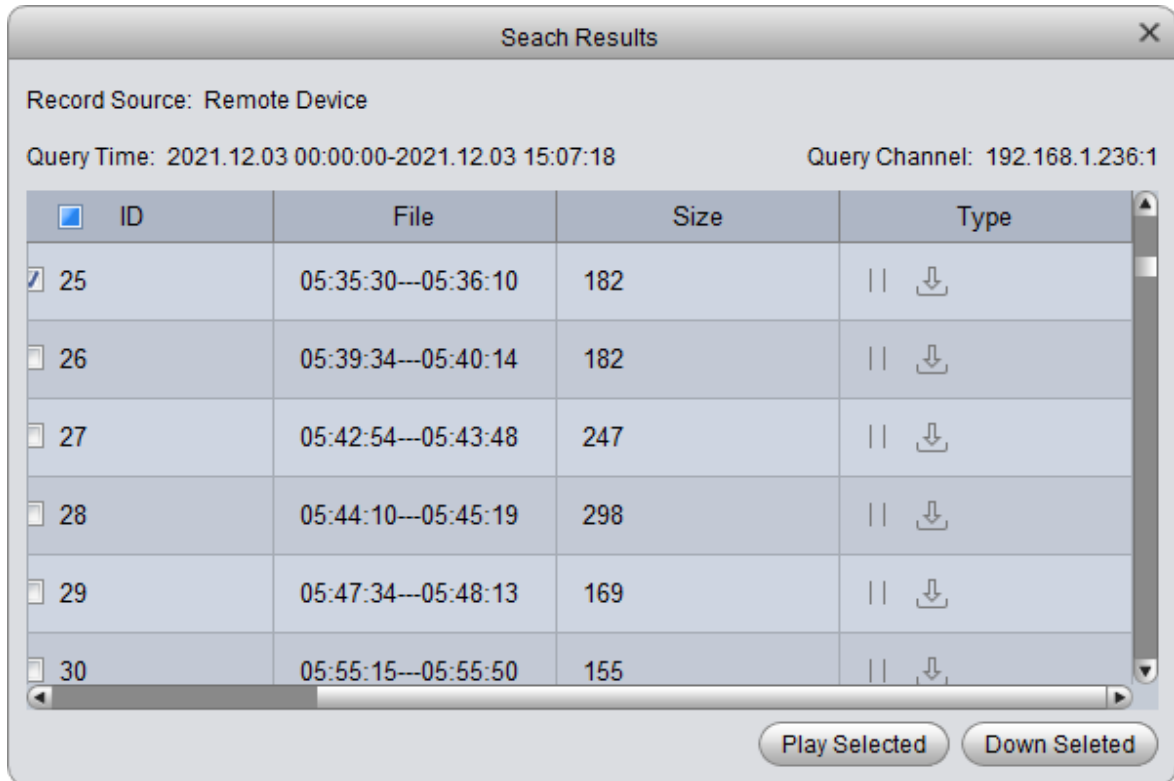
6.3 Playback Local Recording

Prerequisites: There is a device recording on the channel. (For details, see 3.2 Real-time

preview)

Steps:

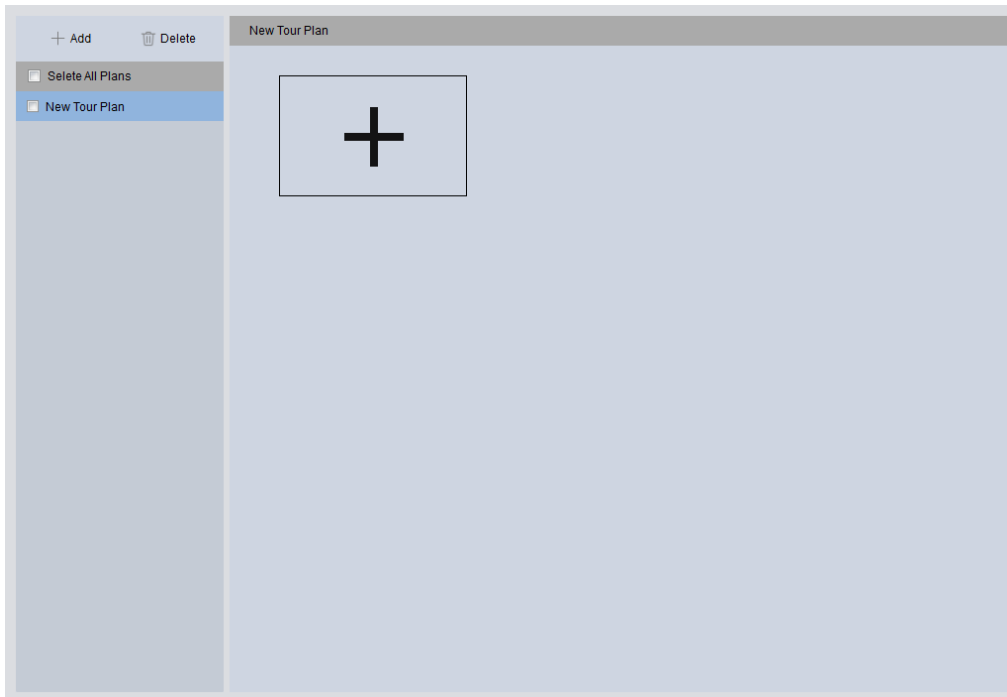
1. Select the Local tab on the Playback screen.
2. Select the device channel in the "Device Tree".
3. Select "Video" in the query conditions, then select the video type, stream, and time, and click Search.
4. In the query results page, select the file to play.

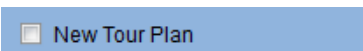


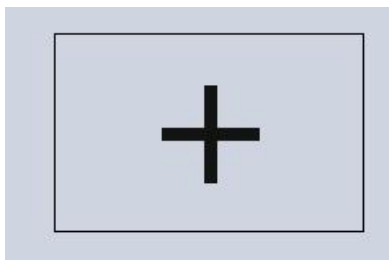
5. If you select a picture in the search criteria and then select the time, you can view the local capture.

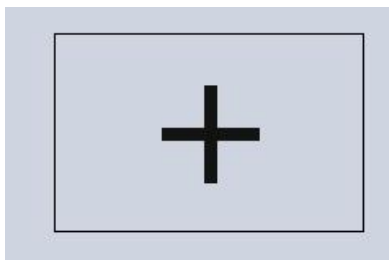
7 Round Trip Plan

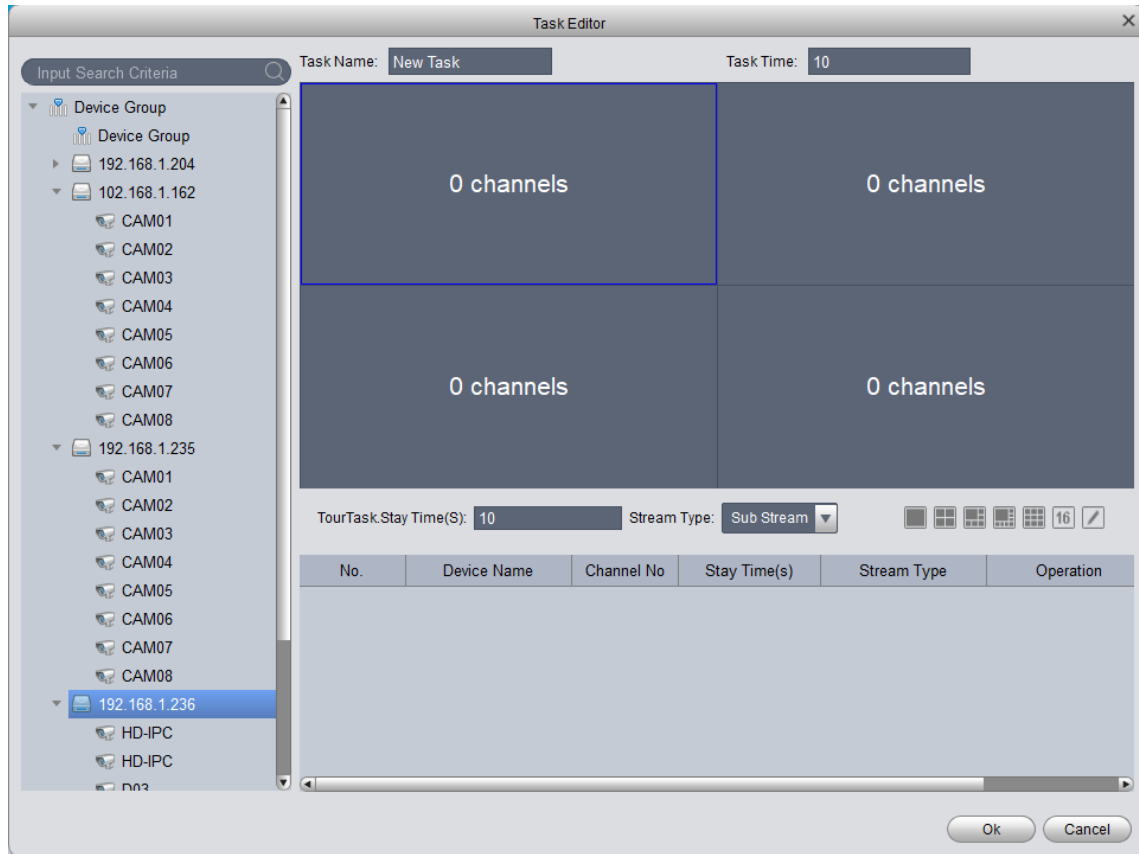
7.1 Configure Round Robin Plan



1. Enter the roving plan page to create a new roving plan.
2. Double-click  to rename (default name is new rotation plan).




3. Click to  add the rotation training task to the selected round robin plan and enter the task editing interface.



4. **Task Name:** Name the rotation training task (default name is new task).

5. **Task Time:** Set the task dwell time (when performing round robin plan, the next task will be played when the task dwell time ends).

6.  Set the number of polling windows.

7. Drag the channel of the left device tree to the corresponding window to add a video channel.

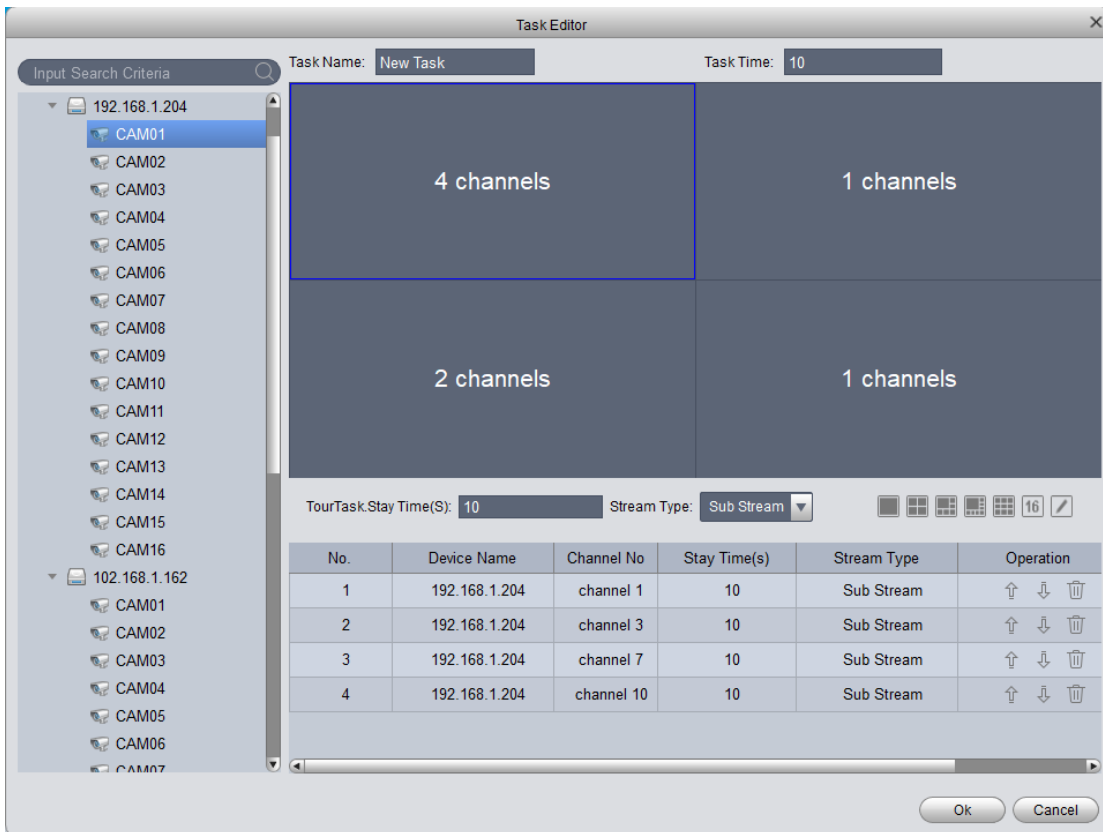
8. **TourTask.Stay Time(S):** **Stream Type:** Set the default dwell time and stream type for dragging into the video channel.

9. If you want to modify the dwell time or stream type after adding a video channel, double-click the cell to modify it.

No.	Device Name	Channel No	Stay Time(s)	Stream Type	Operation
1	192.168.1.204	channel 1	10	Sub Stream	↑ ↓ 🗑️
				Main Stream	
				Sub Stream	

10. The video channel can be deleted by adjusting the order of the video channels in the task.



11. Repeat 7, 8, 9, 10 to add video channels.



12. Finally, the task's dwell time must be changed. If the task dwell time expires, the next video channel will not be played again. Instead, the next task will be executed. Therefore, the figure above should modify the task dwell time to a value greater than 30. Otherwise, the task cannot be played.

13. Click Save to save the rotation task.



14. Double-click the task name to modify the task name, click  to delete the task, click  to re-enter the task editing interface.

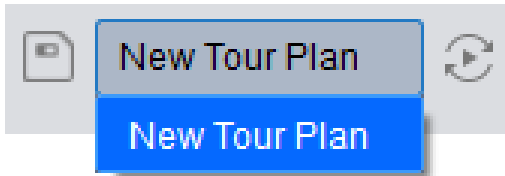
15. Repeat 3 operations to continue adding patrol tasks.




16. Dragging a task to another task can swap the order of execution of the two tasks.

7.2 Carry Out The Round Plan

1. Open the preview interface and select the rotation training plan to be executed in the polling control area (see 3.1 for the specific location).



2. Click  to start the round plan and click again to close.

8 Logs

8.1 Operation Log

Start Time: 2021/12/3 0:00:00

End Time: 2021/12/3 23:59:59

Log Type: **Operation Type**

No.	Time	Event Type
1	2021-12-03 16:50:40	Edit device,CloudID:se138153fd
2	2021-12-03 16:48:44	[admin]Login System
3	2021-12-03 15:11:30	Add device,CloudID:se02ce4658
4	2021-12-03 15:10:30	Del device,CloudID:
5	2021-12-03 15:10:21	Del device,CloudID:
6	2021-12-03 15:09:05	Add device,CloudID:av78850e85
7	2021-12-03 15:00:00	Add device,CloudID:se138153fd
8	2021-12-03 14:58:39	Add device,CloudID:se016464b6
9	2021-12-03 14:56:45	[admin]Login System
10	2021-12-03 14:55:37	[admin]Login System
11	2021-12-03 14:54:44	[admin]Login System
12	2021-12-03 14:53:33	Del device,Ip:192.168.1.7
13	2021-12-03 14:53:16	[admin]Login System
14	2021-12-03 14:52:31	[admin]Login System
15	2021-12-03 14:51:57	Oper.Device[192.168.1.7]Tip.Login success
16	2021-12-03 14:48:05	[admin]Login System
17	2021-12-03 13:30:05	Add device,Ip:192.168.1.7

Every page shows: 16

1. Select the operation log in the log type .
2. Set the end time of the start time and click on Search.
3. Click the Export button to export the contents of the table as an XML file.

8.2 Alarm Log

Start Time: Log Type: Device:

End Time: Alarm Type:

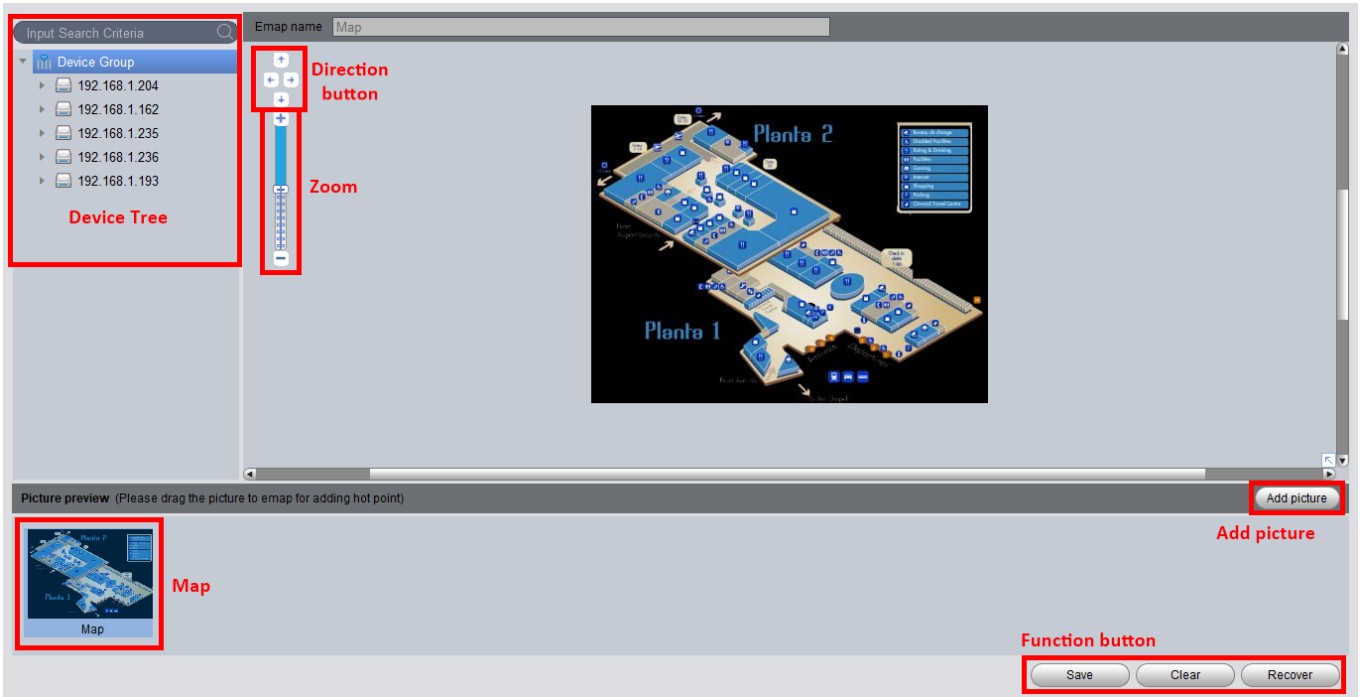
No.	Device Name	Channel No	Time	Event Type
1	192.168.1.204	Channel11	2021-12-03 17:45:23	Motion
2	192.168.1.204	Channel3	2021-12-03 17:45:23	Motion
3	192.168.1.204	Channel1	2021-12-03 17:45:20	Motion
4	192.168.1.204	Channel2	2021-12-03 17:45:19	Motion
5	192.168.1.204	Channel13	2021-12-03 17:45:19	Motion
6	192.168.1.204	Channel3	2021-12-03 17:45:11	Motion
7	192.168.1.204	Channel11	2021-12-03 17:45:03	Motion
8	192.168.1.204	Channel2	2021-12-03 17:45:03	Motion
9	192.168.1.204	Channel3	2021-12-03 17:45:01	Motion
10	192.168.1.204	Channel11	2021-12-03 17:44:53	Motion
11	192.168.1.204	Channel2	2021-12-03 17:44:52	Motion
12	192.168.1.204	Channel14	2021-12-03 17:44:52	Motion
13	192.168.1.204	Channel13	2021-12-03 17:44:52	Motion
14	102.168.1.162	Channel2	2021-12-03 17:44:51	Motion
15	192.168.1.204	Channel3	2021-12-03 17:44:41	Motion
16	192.168.1.204	Channel13	2021-12-03 17:44:41	Motion
17	192.168.1.204	Channel2	2021-12-03 17:44:37	Motion

Every page shows: 16 < < 1/2 > > | Jump to Page Jump

1. Select the alarm log in the log type.
2. Set the start time, end time, alarm type, device name, click Search.
3. Click the Export button to export the contents of the table as an XML file.

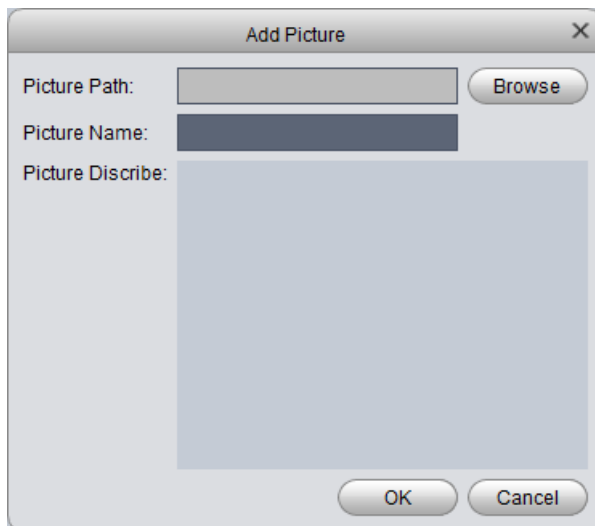
9 Digital Map

The electronic map can clearly show the location of the managed device.



How to create an electronic map.

1. Click the Add Picture button to bring up the dialog box shown below.



2. Click the picture preview to select a picture, enter a picture name, picture description, and click OK to add the picture.
3. Double-click the added picture to open the map.
4. Drag the camera from the device tree to its location, and drag the other maps from the map bar to where the map is located. If you hover over the hot spot, the mouse will show the close button and delete the hot spot.

5. Click Save to save the edit, click Clear to clear all points on the map, and click Resume to restore the status before this edit.

10 Event

In the "Events" interface, you can view the real-time alarm information. You can view the latest 1000 messages at the latest. For historical alarm messages, query the logs. For details on the log query, see "8 Logs."

Select the event, you can select "disable alarm sound" to disable the alarm sound for the event; select "disable pop-up linked video", disable the pop-up video for the event; select "pause refresh" to pause the refresh of the event.

Select the event and click "annotate" to add description information to the event.

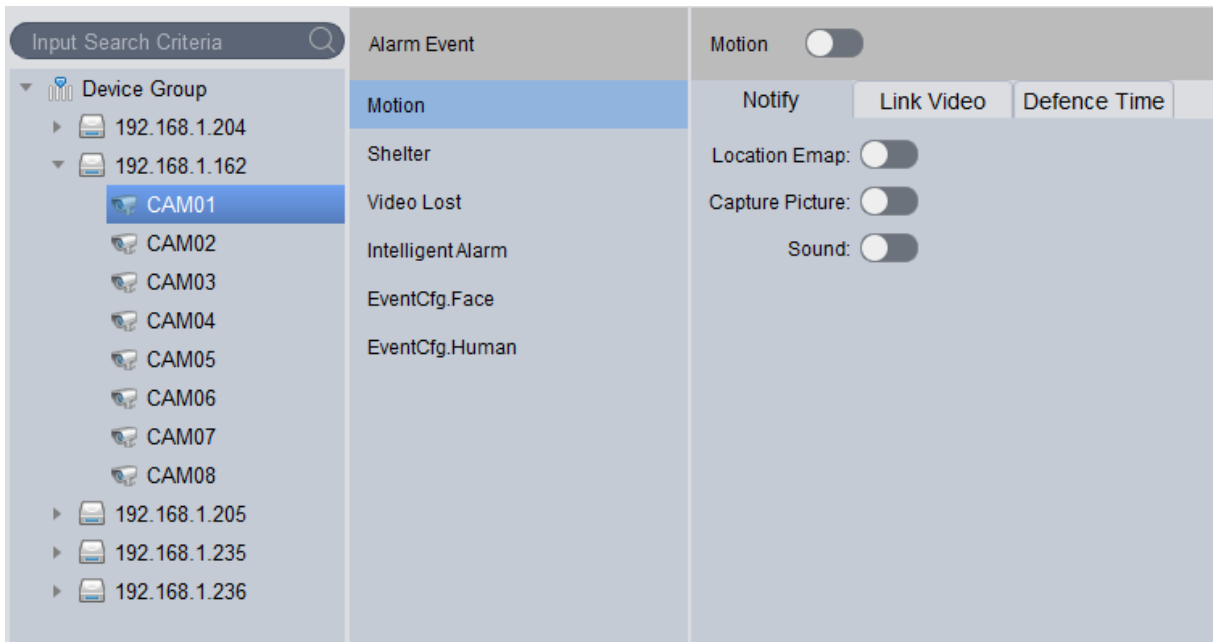
After the event is processed or annotated, the state of the event cannot be modified.

Handle Total 26 records. Handled: 0, Unhandled: 26 <input type="checkbox"/> Stop Refresh								
<input type="checkbox"/> Check All	Occur Time	Event Type	Device Name	Channel Name	Handing Person	Handing Time	Handing Remark	Handing Status
<input type="checkbox"/> 1	2021-12-06 13:54:18	Motion	192.168.1.204	Channel 3	N/A	N/A		✓
<input type="checkbox"/> 2	2021-12-06 13:54:17	Motion	192.168.1.204	Channel 13	N/A	N/A		✓
<input type="checkbox"/> 3	2021-12-06 13:54:17	Motion	192.168.1.204	Channel 11	N/A	N/A		✓
<input type="checkbox"/> 4	2021-12-06 13:54:17	Motion	192.168.1.204	Channel 2	N/A	N/A		✓
<input type="checkbox"/> 5	2021-12-06 13:54:14	Motion	192.168.1.236	Channel 1	N/A	N/A		✓
<input type="checkbox"/> 6	2021-12-06 13:54:06	Motion	192.168.1.204	Channel 13	N/A	N/A		✓
<input type="checkbox"/> 7	2021-12-06 13:54:06	Motion	192.168.1.204	Channel 11	N/A	N/A		✓
<input type="checkbox"/> 8	2021-12-06 13:54:06	Motion	192.168.1.204	Channel 3	N/A	N/A		✓
<input type="checkbox"/> 9	2021-12-06 13:54:06	Motion	192.168.1.204	Channel 2	N/A	N/A		✓
<input type="checkbox"/> 10	2021-12-06 13:53:56	Motion	192.168.1.204	Channel 13	N/A	N/A		✓
<input type="checkbox"/> 11	2021-12-06 13:53:55	Motion	192.168.1.204	Channel 2	N/A	N/A		✓
<input type="checkbox"/> 12	2021-12-06 13:53:54	Motion	102.168.1.162	Channel 5	N/A	N/A		✓
<input type="checkbox"/> 13	2021-12-06 13:53:51	Motion	192.168.1.204	Channel 3	N/A	N/A		✓
<input type="checkbox"/> 14	2021-12-06 13:53:51	Motion	192.168.1.204	Channel 11	N/A	N/A		✓
<input type="checkbox"/> 15	2021-12-06 13:53:46	Motion	192.168.1.204	Channel 13	N/A	N/A		✓
<input type="checkbox"/> 16	2021-12-06 13:53:44	Motion	192.168.1.236	Channel 1	N/A	N/A		✓
<input type="checkbox"/> 17	2021-12-06 13:53:40	Motion	192.168.1.204	Channel 3	N/A	N/A		✓
<input type="checkbox"/> 18	2021-12-06 13:53:36	Motion	192.168.1.204	Channel 13	N/A	N/A		✓


Every page shows: 18 |< < 1/2 > |> Jump to Page Jump



11 Event Configuration

After the linkage notification is configured, an alarm is notified when the corresponding event occurs. Supports the configuration of multiple event linkage notifications. (using motion detection as an example)

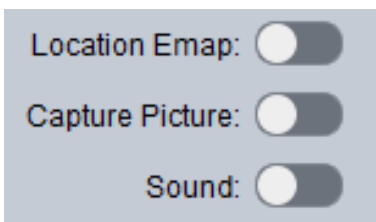


1. Select the channel to configure on the device tree.
2. Select motion detection in alarm events.

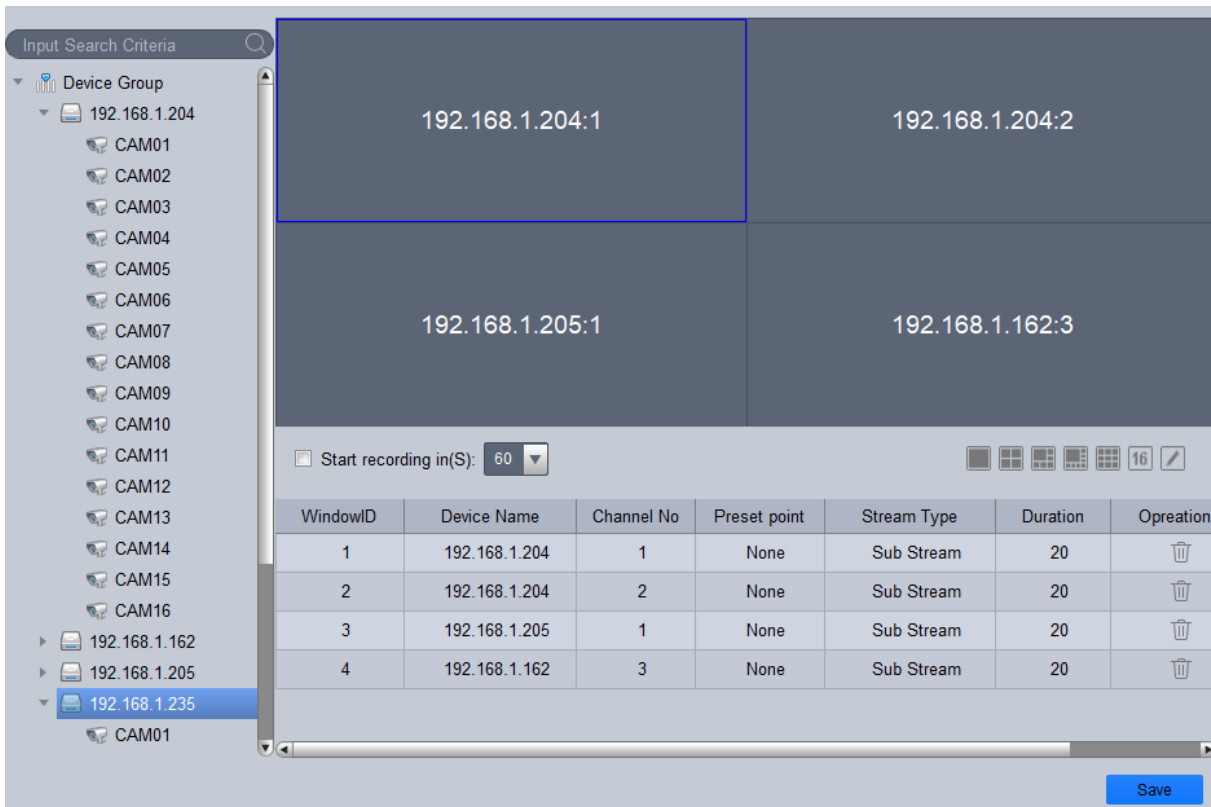
3. Open the alarm for the device's mobility policy. (click motion detection switch ,

off , open ).

4. Select the notification, open the map flashing, alarm capture, alarm sound (map flashing needs to open in the system settings pop-up electronic map to take effect).



5. Select the linked video and configure the linked video. (Linked video needs to be opened in the system settings to activate the alarm).



6. By setting the alarm window window mode.

7. Drag the channel into the corresponding window.

8. Start recording in(S): Check to open the alarm recording and set the recording duration.

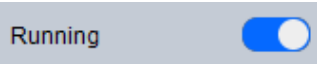
9. Double-click the cell to modify the stream duration, duration, click , delete the video channel.

WindowID	Device Name	Channel No	Preset point	Stream Type	Duration	Opreation
1	192.168.1.204	1	None	Sub Stream	20	
2	192.168.1.204	2	None	Main Stream	20	
3	192.168.1.205	1	None	Sub Stream	20	
4	192.168.1.162	3	None	Sub Stream	20	

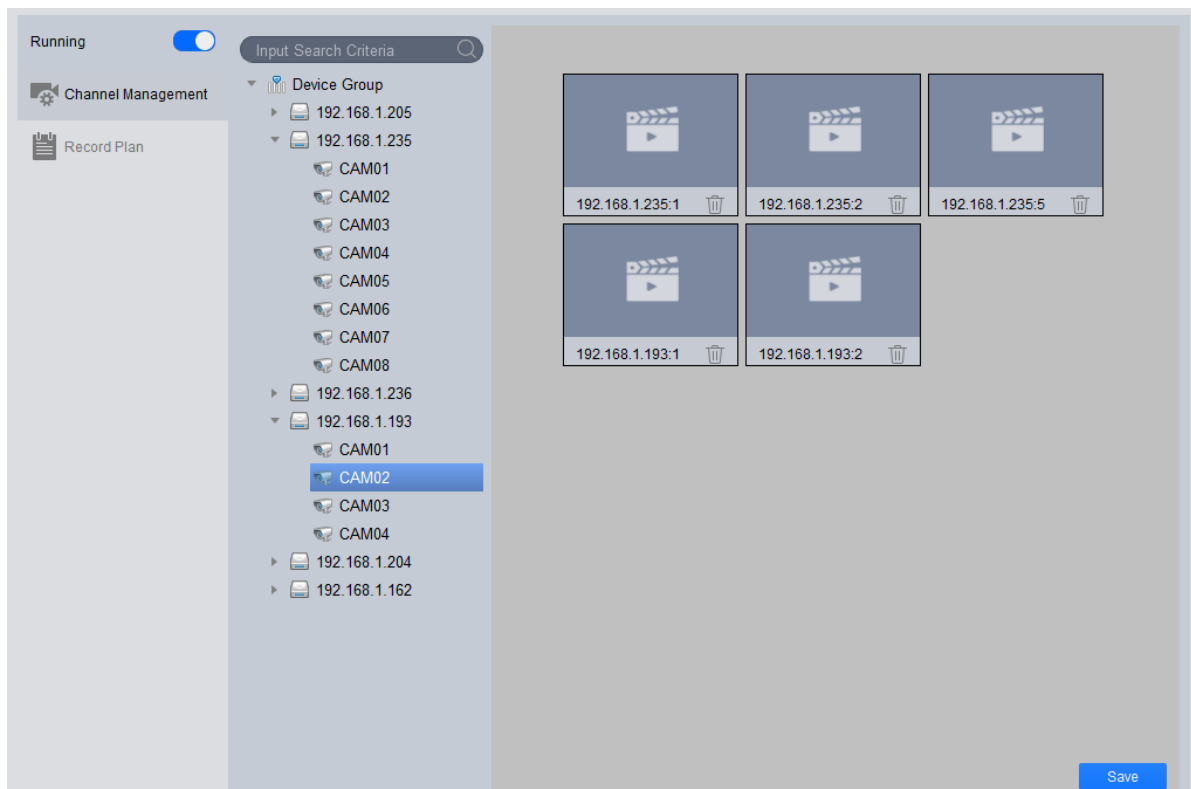
10. Click Save to save the alarm configuration.



12 Record Plan

It can realize the client's local scheduled recording, and can record multiple devices at the same time, at different time, video, general video, alarm video and video recording. The recording plan switch is shown below.

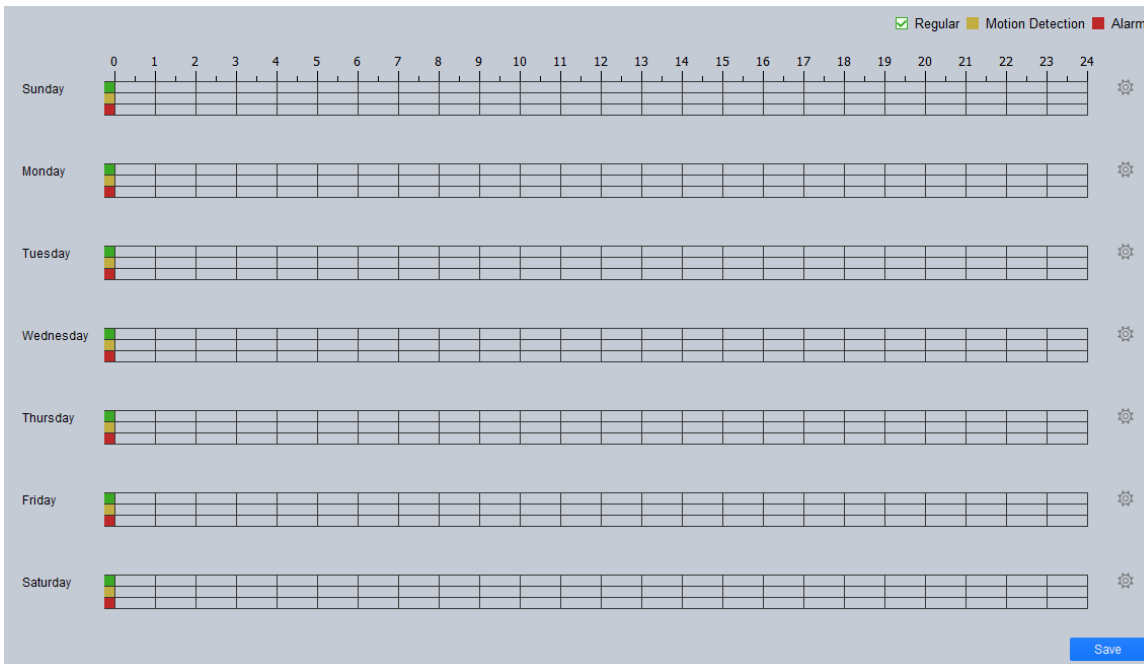


12.1 Add Channel

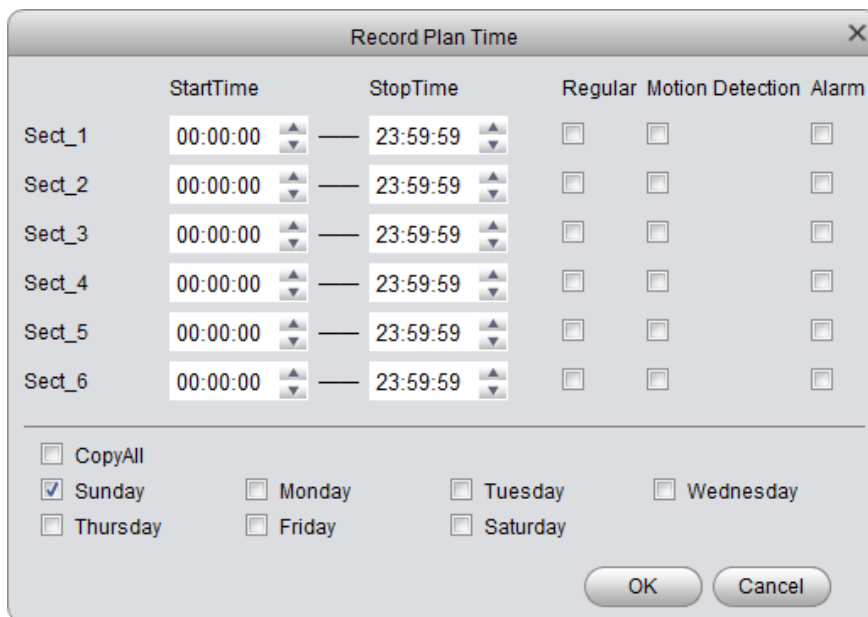


1. Select to  Channel Management enter the channel management interface.
2. Drag the channel to the right channel list and click  to delete the channel.
3. Click Save to save the channel list.

12.2 Video Plan



1. Select **Record Plan** to enter the setting time period interface.
2. Select **Regular** **Motion Detection** **Alarm** the pen type, draw directly on the time bar, or erase the time period setting time. You can also the button to enter the setting plan time interface to click set the time period.

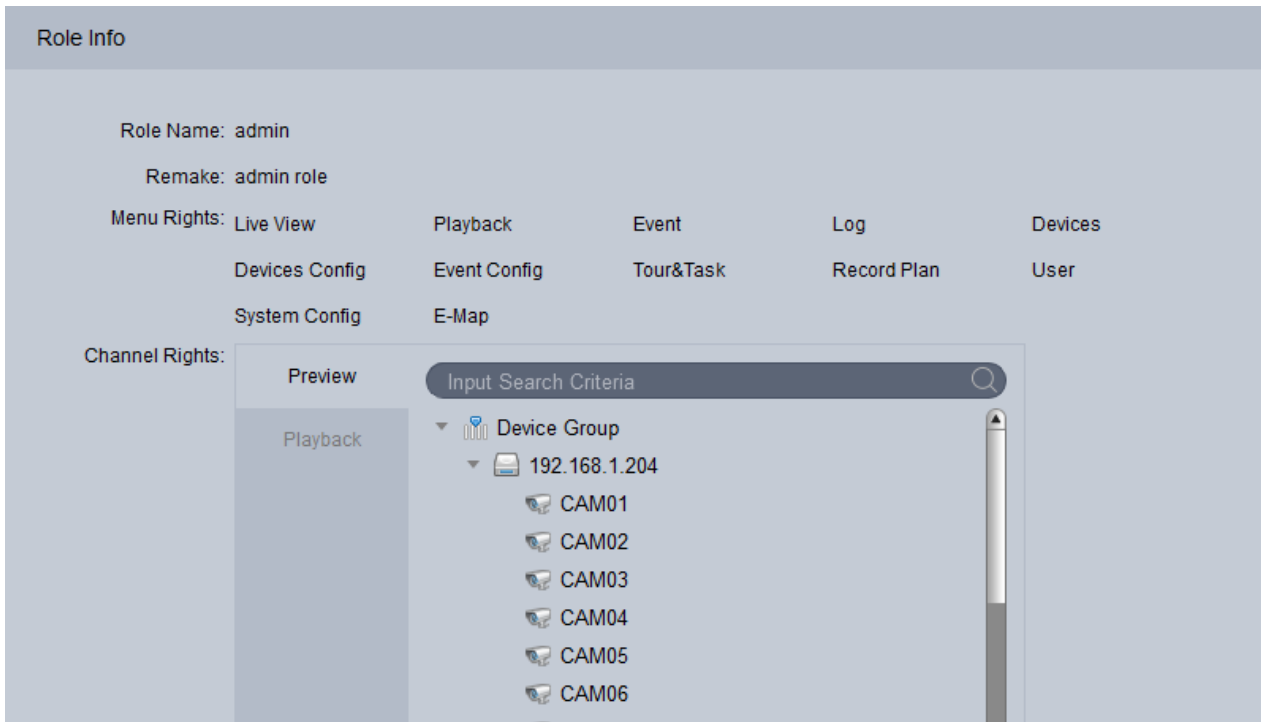



3. Click Save to save the recording period.

13 User Configuration

13.1 Role Management

You can add, modify, and delete roles



1. Click  to add a role.
2. Enter a role name, enter a comment, check the menu permissions, and channel rights.
3. Click Save to save the role.

Note:

1. When the user under the corresponding role logs in to the client, the menu-unassigned function is not displayed on the new function page, and the channel to which no channel permission is assigned is also not displayed in the corresponding device tree.
2. admin has all permissions and cannot be modified or deleted. Adding roles supports modifying role permissions or deleting roles. (Other roles have no user management)
3. When deleting a role, the existing user under the role will also be deleted. Please confirm it before proceeding.

13.2 User Management

You can add, modify, and delete users.

Click  to add a user.

1. Enter the user name, select the user's role (different roles can choose different user rights), enter the password, confirm the password, enter the comment, check the menu permissions, channel permissions.
2. Click Save to complete the user addition.

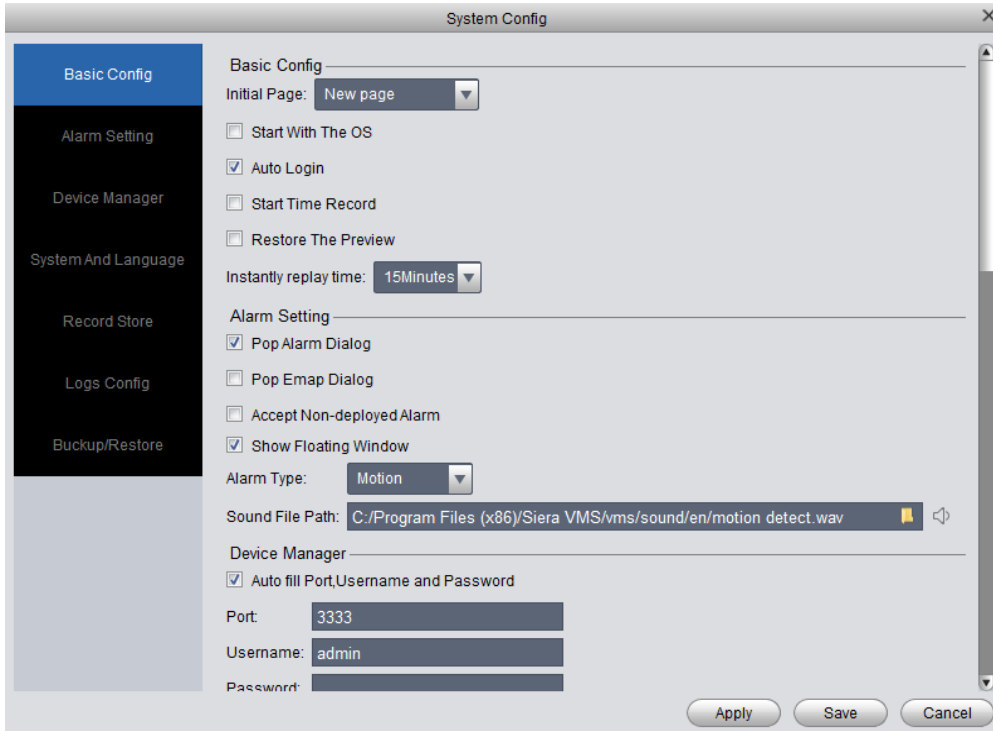
Note:

1. admin has all rights and cannot be modified or deleted. Add user support to modify user rights or delete users.
2. User rights You can only add the rights owned by the user's role.

Click  to delete users or roles and click  to edit users or roles.

14 System Configuration

You can set the system parameters of the software. Click in the upper right corner of the main interface. The System Configuration pop-up window is displayed.



	Parameter	Description
Basic configuration	Start up from power-on	Select “Boot-up from power-on” . When the computer is turned on, the software starts automatically.
	Automatic login	Select "Automatic login" and restart the software. The software automatically logs in the added device. Modifying this parameter takes effect after restarting the software.
	Automatically start scheduled recording	Select “Restore last preview view” . When the software is closed, record the status of the preview video window at the time. When you log in again and open the preview interface, the previous video will be restored.
	Restore Last Preview View	Select “Restore Last Preview View” . When the software is closed, the preview video window status will be recorded. When you log in again and open the preview interface, the previous video will be restored.
Alarm configuration	Alarm Pop-up	Alarm Pop-up Select “Alarm Pop-up” to open the alarm pop window when the alarm linkage video

		triggers.
	E-map pop-up	Select “Eject pop-up map” . When the alarm configuration turns on the map flashes and an alarm event is triggered, the electronic map will open.
	Display Event Suspending Window	When “Show Event Suspending Window” is selected, the event suspension window will be displayed. Double-click the event suspension window to enter the event interface.
	Audio file path	Set the sound file when the alarm sound is triggered
Device Management	Automatic Filling	Select Auto Fill User Name/Password and enter the user name and password. The software automatically logs in the added device based on the set user name and password. If the user name and password are the same as the login user name and password of the device, the login succeeds. Otherwise, the login fails.
System and Language	Automatic time setting	Select “Automatic adjustment time” and set the corresponding time point. When the time is on, the software automatically synchronizes time with the local PC.
	Immediately adjust the time	click on “immediately adjust the time” , and the software will synchronize the time with the local PC.
	Language	Set the language of the software. Modifying this parameter takes effect after restarting the software.
	The software is maximizing	The way when the software is maximized. Includes full screen and window maximization.
File path	Picture Save Path	The path where the capture file is saved.
	Manual recording path	Click the recording button to record the recorded file path.
	Device Recording Path	The path of the recording file downloaded from the device.
	Timing/Alarm Recording Path	The recording file and alarm recording path saved in the recording plan.
	Snapshot save type	Set the saved picture format

	Video save type	Set the saved video format
	Disk remaining capacity	Set the minimum value of the remaining capacity of the disk.
	Manual recording packing time	Set the length of time for each manual recording.
	Scheduled video recording time	Set the length of time for each timer recording.
	Whether to overwrite	Select whether to overwrite. If Yes is selected, the disk capacity will be overwritten when the capacity reaches the minimum value. If no, the recording will be stopped.
Log	Log Hold Time	Set the alarm log and system log record save time in days.