

# Instructions for X-PRO Server II installation

(For version 4.0.0.79 or higher)

## Catalog

1.Server configuration requirement .....	2
2.Preparation .....	2
3.Installation: .....	3
4.Port forwarding .....	6
5.Tips .....	7

## 1. Server configuration requirement

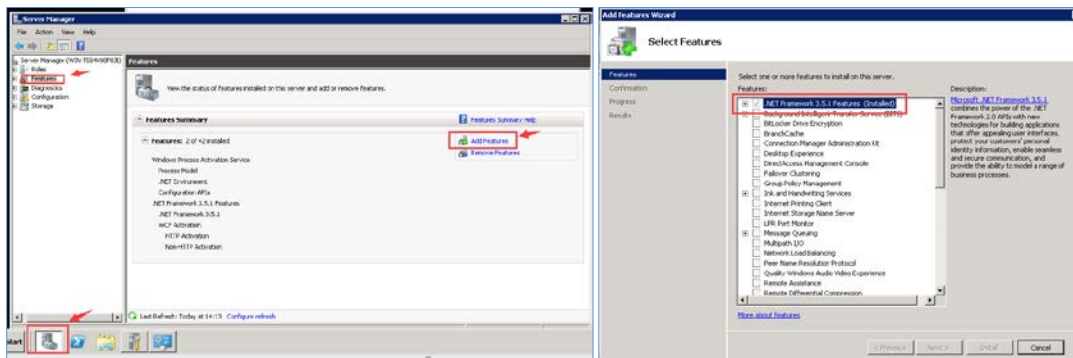
Minimum requirement of the server	
system	Windows 2008 R2 Standard, 64bit
memory	8G at least
HDD	100G at least
lib	Microsoft .Net Framework 3.5 SP1
database	MySQL 5.5 (included)
User authority	Administrator
CPU	Quad-Core Xeon 5504*2 or better

## 2. Preparation

### 1) Net framework 3.5 SP1

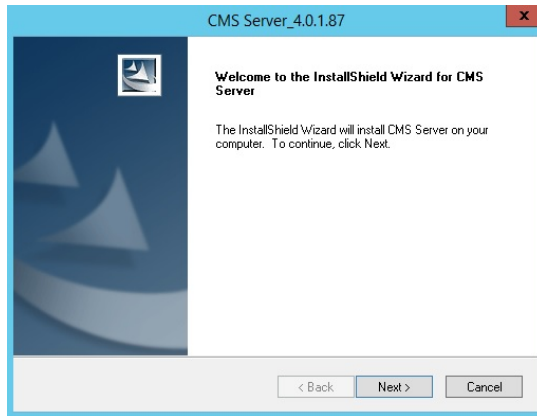
Click  Start >> Management Tool >>  Server Manager.

Click Features >> Add Features >> make a full choice of .net framework 3.5 SP1

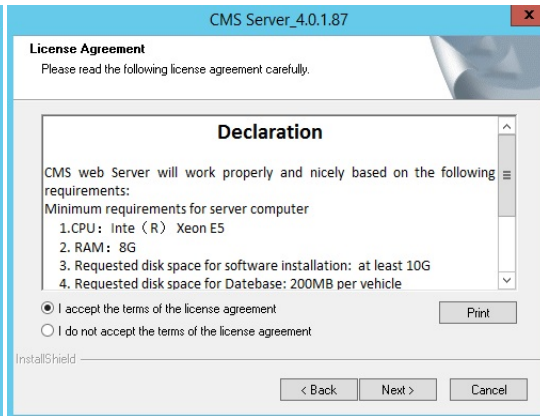


### 2) Please keep the ports as default during the installation process, unless they are used for other devices.

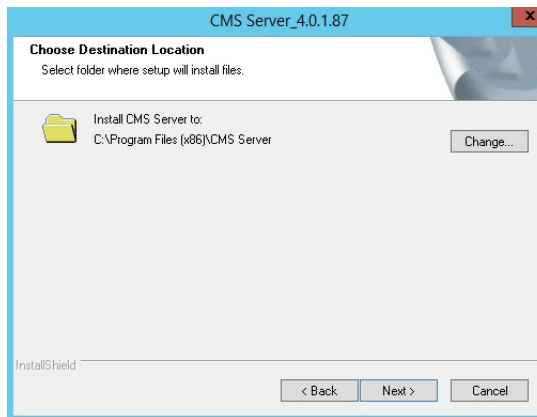
### 3.Installation:



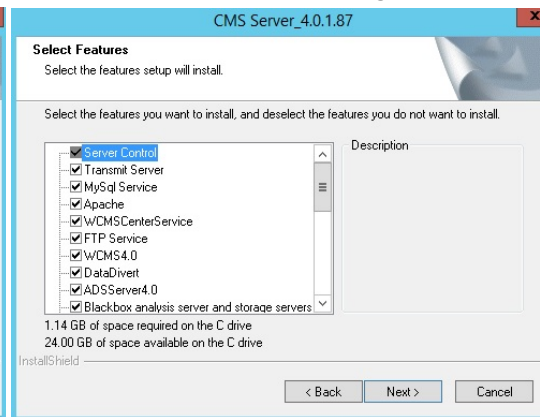
Server installation



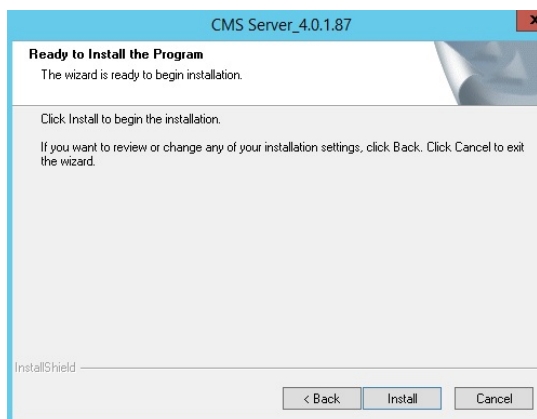
Server declaration and agreement



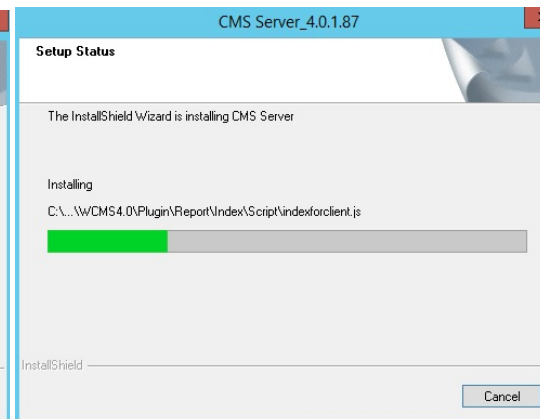
Server location



Server features setup



Ready to install



Installing

CMS Server\_4.0.1.87

**The server port configuration**

Please config the port, default ports are recommended, if the default port is used, please change it to another.

MessagePort: 5555

VideoPort: 12091

IP: 192.168.60.162

**Input server WAN IP address instead**

InstallShield

< Back Next > Cancel

Message & Video ports configuration

CMS Server\_4.0.1.87

**The server port configuration**

Please config the port, default ports are recommended, if the default port is used, please change it to another.

RunningPort: 10086

InstallShield

< Back Next > Cancel

Running Port configuration

CMS Server\_4.0.1.87

**The server port configuration**

Please config the port, default ports are recommended, if the default port is used, please change it to another.

ListenPort: 7264

Playback port: 12045

ForwardingPort: 17891

InstallShield

< Back Next > Cancel

Listen & Playback & Forwarding ports configuration

CMS Server\_4.0.1.87

**The server port configuration**

Please config the port, default ports are recommended, if the default port is used, please change it to another.

IE Port: 12050

Device connection port: 12051

Device connected IP: 192.168.60.162

**Input server WAN IP address instead**

InstallShield

< Back Next > Cancel

IE & Device connection ports configuration

CMS Server\_4.0.1.87

**The server port configuration**

Please config the port, default ports are recommended, if the default port is used, please change it to another.

Data Port: 12042

Http data port: 12041

Black Box Webport: 12040

InstallShield

< Back Next > Cancel

Data & Http data & Blackbox ports configuration

InstallShield Wizard

Select your unit

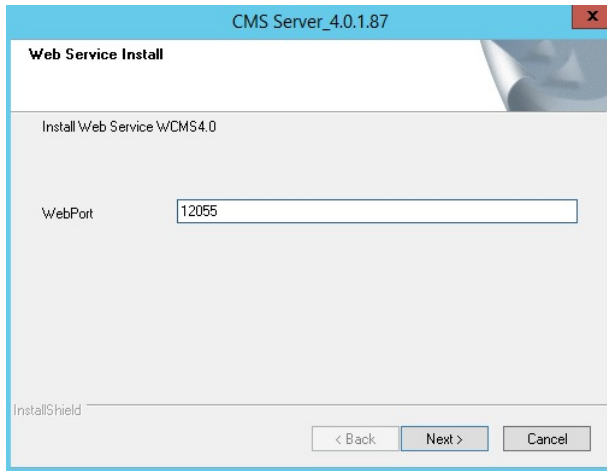
Speed: KM/H

Temperature: Centigrade

InstallShield

< Back Next > Cancel

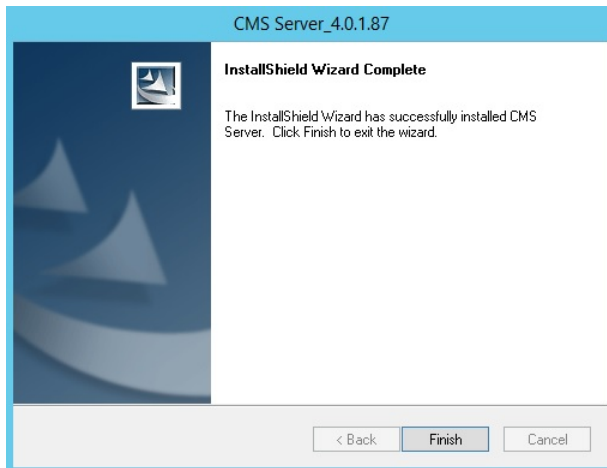
Speed and Temperature configuration



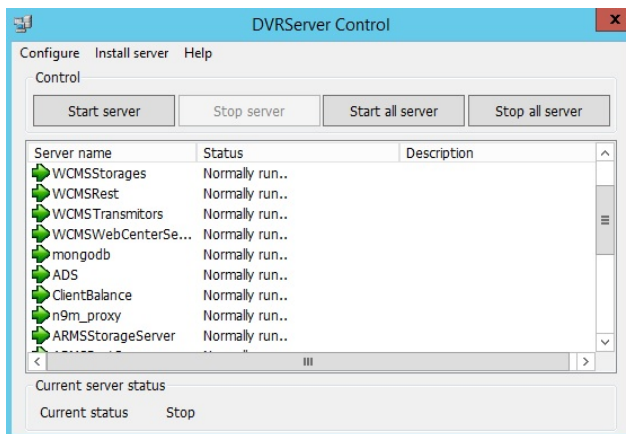
Web port configuration



Certificate import--please cancel this step as it is not necessary for this application in current stage.



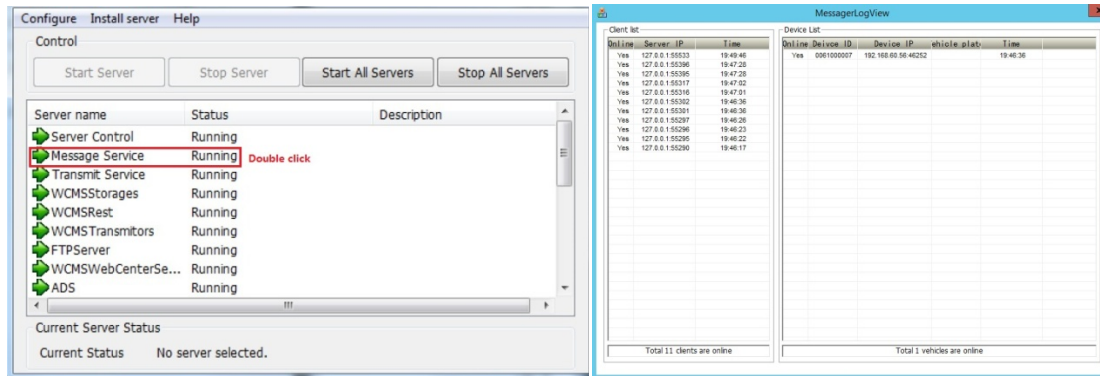
Installation complete



All the server services should run normally in server control.

If some of them are not running--please check the .net framework 3.5 SP1 installation.

If all the the server services are not running—please exit the server control and run the application as administrator.



Double click the “Message service” in server control window, you will know how many devices are online.

## 4.Port forwarding

Please contact your IT support to do the port forwarding in server router after finish the server installation.

*Note: Service protocol type should be FTP.*

Please forwarding the ports below:

Balance server port: 7264

Transmit server port: 17891

Client access server port: 12020

Blackbox data query port: 12040,12041,12042

Website port: 12055

Playback server port: 12045

Proxy server client data port: 12050

Proxy server device data port: 12051

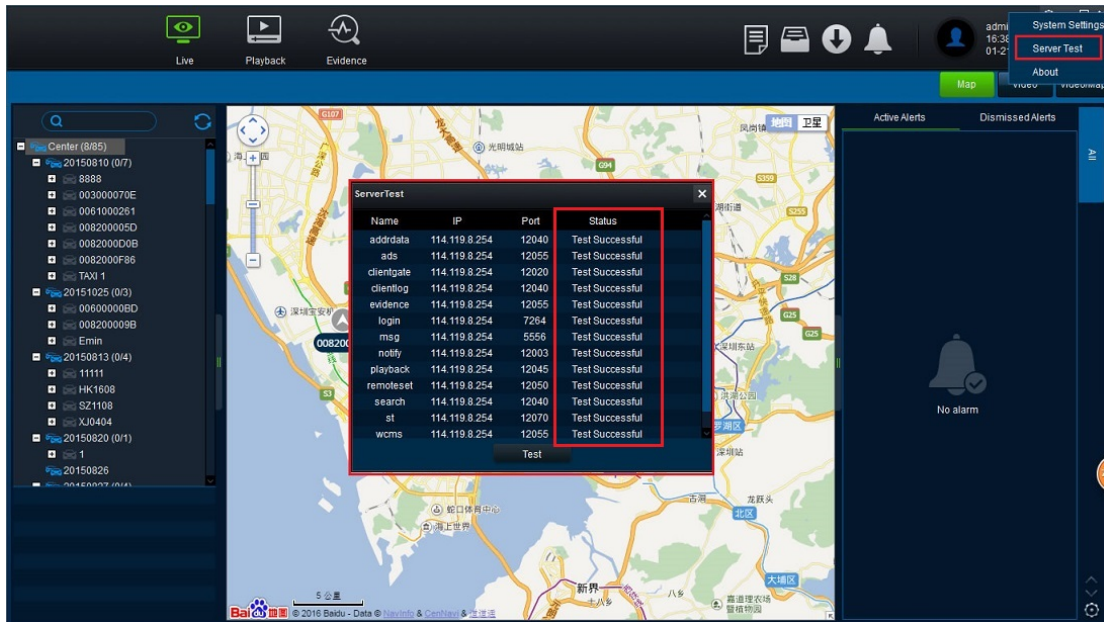
Device access to server port: 5556

N9M streaming media server port: 12092

MDVR streaming media server port: 12091

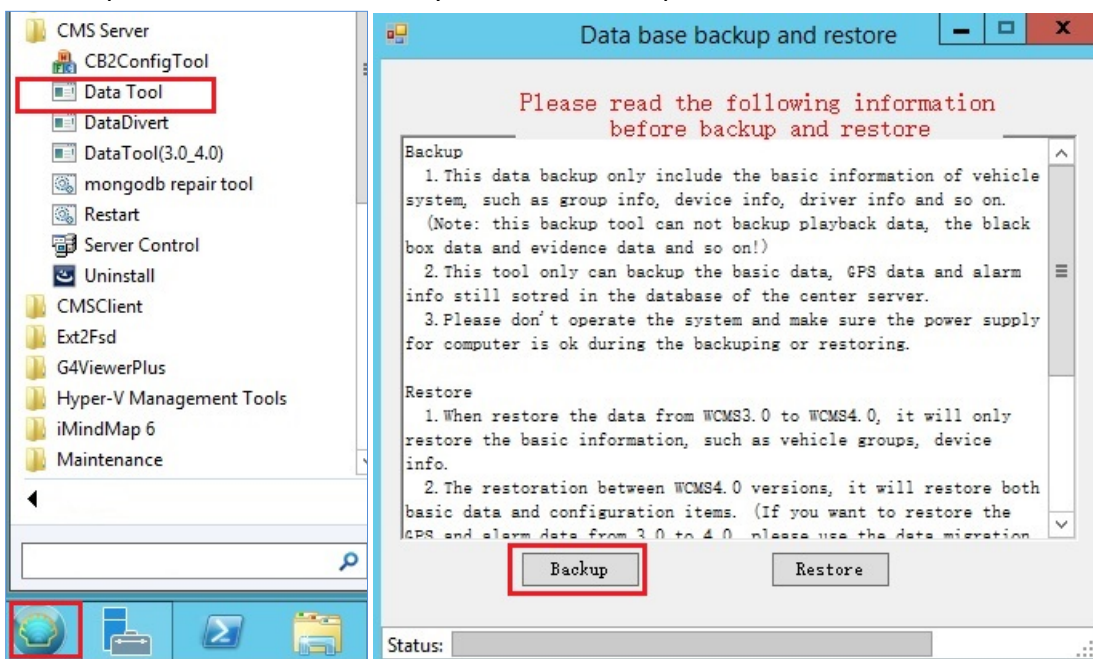
Http message port: 12003

Please check the ports status on Ceiba2 after port forwarding, as the picture shows below:



## 5.Tips

- 1). Please install X-PRO Server II with administrator limits;
- 2). Default account:  
Login Type: Server; Username: admin, Password: admin  
Login Type: Local; User: admin, no password
- 3). Before you install a new server version, please backup the data first, then import the backup data after the new version is installed.  
The pictures below will show you how to backup the data:



*Note: The backup feature can only backup user and vehicle information. This cannot backup playback data, blackbox data and evidence data.*