

192.168.1.101, IP address could be checked from the terminal information) then press enter.

(2) Enter the user name and password in Web login window (default is admin), click OK.

Specifications, Functional Unit and Parameters

| | |
|--------------------------------|---|
| Input Power voltage | DC12V 2A |
| Functional unit interface | Voice frequency input port, 1pc Voice frequency output port, 1pc Power input port, 1pc RJ45 network port, 1pc SD card port, 1pc |
| Network communication protocol | TCP/IP 、 UDP 、 ARP 、 ICMP 、 SIP 、 IGMP protocol |
| Network chip rating | 10/100Mbps self -adaption |
| Voice frequency encoding | MP2 、 MP3 、 PCM 、 ADPCM |
| Audio sampling | 8K ~44.1KHz, 16b it |
| Transmit rate | 10K~192Kbps |
| Video encoding format | H.264 |

Trouble shooting

| Fault Phenomenon | Failure Cause and Trouble Removal |
|--------------------------------|---|
| Unable to initiate SIP calling | Check the machine normally login to the server or not, it can check it from the terminal information. |
| Unable to transfer | 1. The target terminal haven't login to server. 2. The target terminal without transfer function. |
| Web abnormal | Empty the cache or modify the browser. |

Packing list



Power adapter
(DC12V/2A) 1pcs



Installation
instructions 1pcs

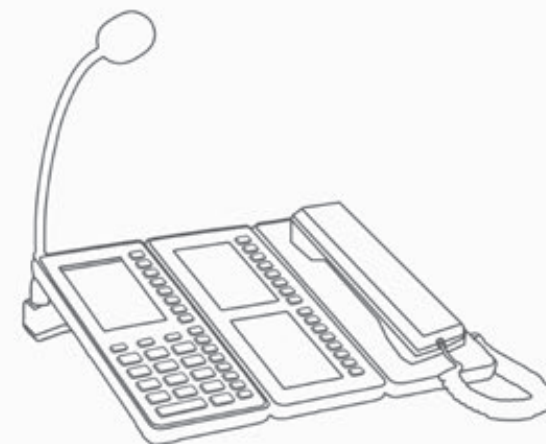


Microphone
pole 1pcs



Certification 1pcs

IP VIDEO PAGING MICROPHONE Installation Manual



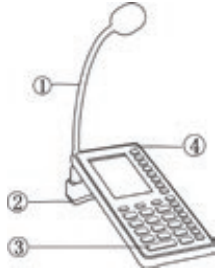
SIERA TECHNOLOGY LIMITED

305, Building C, Bole Industrial Park, Banxuegang Blvd., Bantian, Longgang District
Shenzhen - CHINA
www.sieraelectronics.com

Interface Specification

Front

1.IP network video
microphone



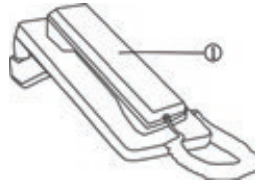
- ① Microphone pole
- ② Loudspeaker
- ③ Keyboard
- Mutual input channel, accept Command input.
- ④ Camera

2.Expansion panel
(optional configuration)



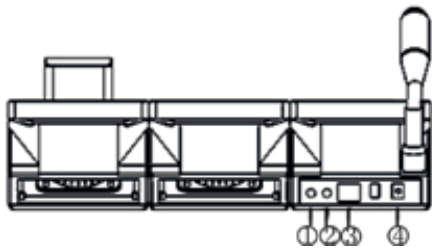
- ① Key
 - ② Display screen
- True color display screen indicate complete machine login status, volume value, partition list and other relevant information

3.Receiver panel
(optional configuration)



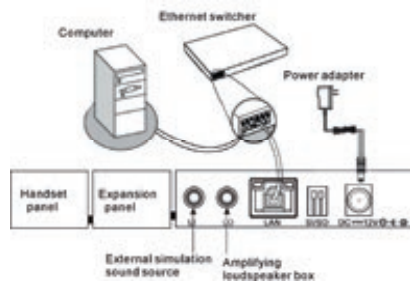
- ① Receiver
- Built-in loud speaker and microphone, Restore the remote voice and set the scene voice.

Back

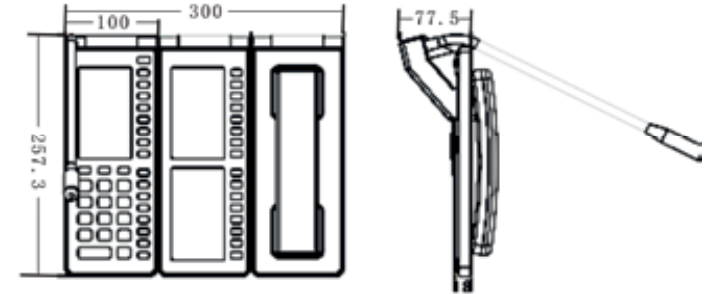


- ① Audio input circuit interface: connect with earphone or other 3.5mm audio plug.
- ② Audio output interface: The interface of the output is the original audio signal. Can be used as a source of sound to the amplifier or active loudspeakers, and background music playing, the factory setting is audio output.
- ③ Ethernet interface: use the cable to connect the server and terminal .
- ④ Power input interface: connect 12V DC

Connection Diagram



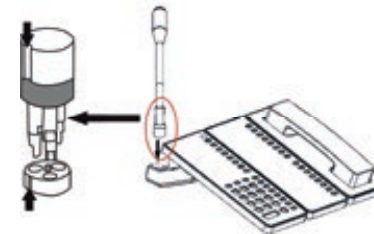
Appearance installation dimension drawing (unit mm)



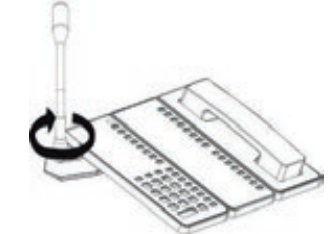
Microphone pole installation method

(1) Microphone pole groove install

Accordance with the pedestal raised groove.



(2) Screwing the rotary knob tightly according to the direction of graphic



Remark: expansion panel and receiver panel is optional configuration.

IP network video microphone setting

Liquid Crystal Display Setting

(1)When the terminal is free, press 【information】 key, enter password 【123456】 could into the system setting interface.

(2)Then press “F4”button in the system setting interface, enter into the terminal setting interface.

· Press F2 button to modify equipment ID, press F3 button to modify equipment IP manually. (Note: ID and IP can not be same as other terminal or mainframe.)

· Press shortcut key F5 in the system setting interface could check the parameters configuration, file management, version information, device and SIP account these information.

· Press shortcut key F6 in the system setting interface could updating the expansion panel program.(please use it carefully)
visit web interface

(1) Please enter the terminal address in browser, (the factory default IP address is

Remark: More information, please refer to the User's Guide.